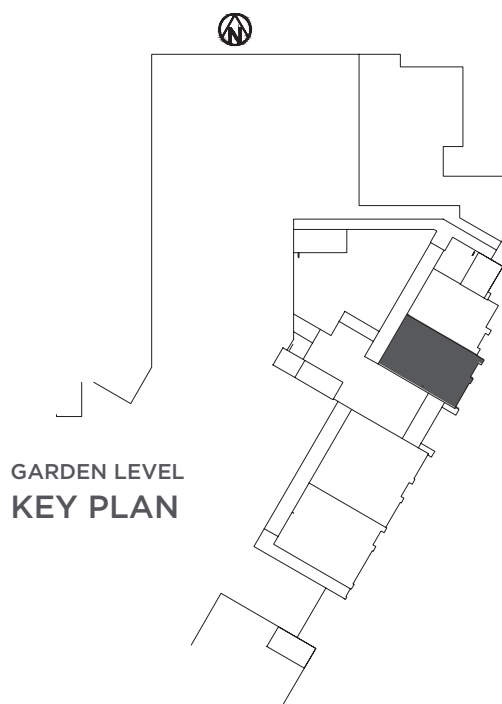


The Campus of  
CurrieGreen

# CARNATION\*

1 Bedroom | 1 Bathroom | Solarium | Storage

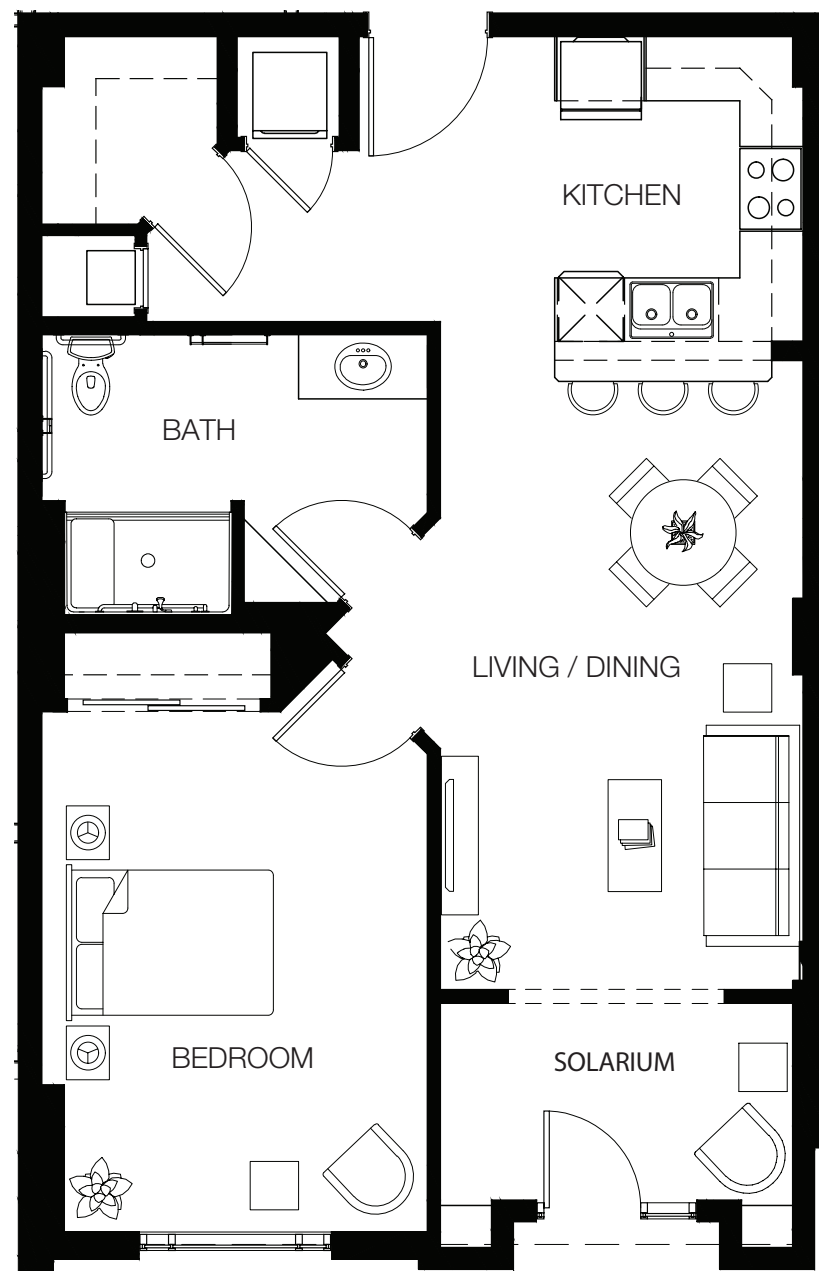
\*Garden Level



GARDEN LEVEL  
KEY PLAN

ROOM SIZES	934 sqft
Bedroom	12'-0" X 16'-2"
Bath	12'-0" X 8'-8"
Living / Dining	10'-11" X 19'-5"
Solarium	10'-11" X 6'-1"
Kitchen	7'-9" X 10'-9"

In our continuing effort to improve the units at Currie Green, the seller reserves the right to modify the interior & exterior design, specifications, location, size, design features, services, amenities and pricing without prior notice. This literature is for "marketing purposes" only and no representations of any type are made by this marketing material, which are subject to change without notice. All dimensions and square footages are approximate and modifications may vary by unit. NOT TO SCALE



TO LEARN MORE VISIT

CurrieGreen.ca

150 Dieppe Drive SW

Tina 403-369-6000

Marguerite 403-369-3000

curriegreen@statesmangroup.com

The Campus of  
CurrieGreen

# CARNATION MF

1 Bedroom | 1 Bathroom | Solarium | Storage

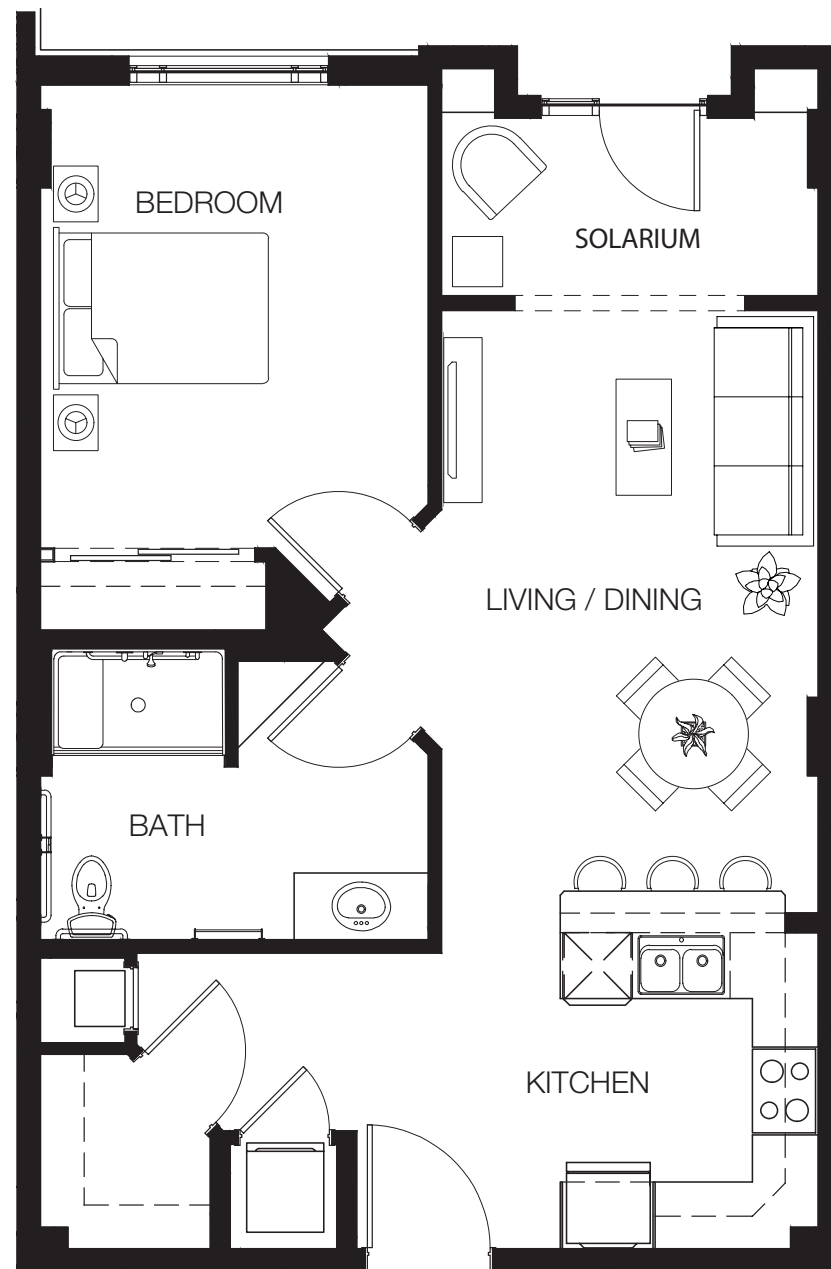
Main Floor



MAIN FLOOR  
KEY PLAN

ROOM SIZES	±864 sqft
Bedroom	11'-7" X 13'-10"
Bath	11'-8" X 8'-8"
Kitchen	7'-9" X 10'-0"
Solarium	11'-3" X 6'-0"
Living / Dining	11'-3" X 17'-3"

In our continuing effort to improve the units at Currie Green, the seller reserves the right to modify the interior & exterior design, specifications, location, size, design features, services, amenities and pricing without prior notice. This literature is for "marketing purposes" only and no representations of any type are made by this marketing material, which are subject to change without notice. All dimensions and square footages are approximate and modifications may vary by unit. NOT TO SCALE



TO LEARN MORE VISIT

CurrieGreen.ca

150 Dieppe Drive SW

Tina 403-369-6000

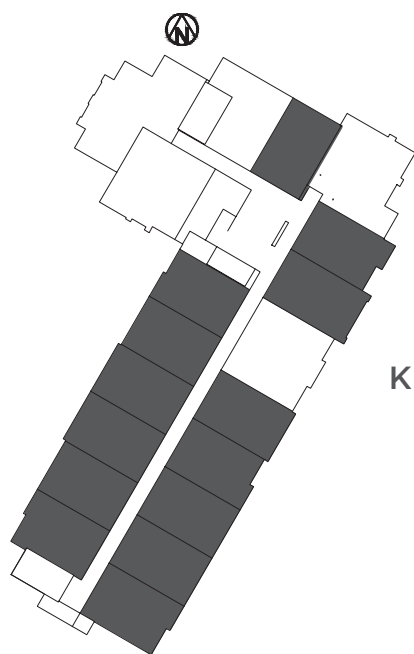
Marguerite 403-369-3000

curriegreen@statesmangroup.com

The Campus of  
CurrieGreen

# CARNATION

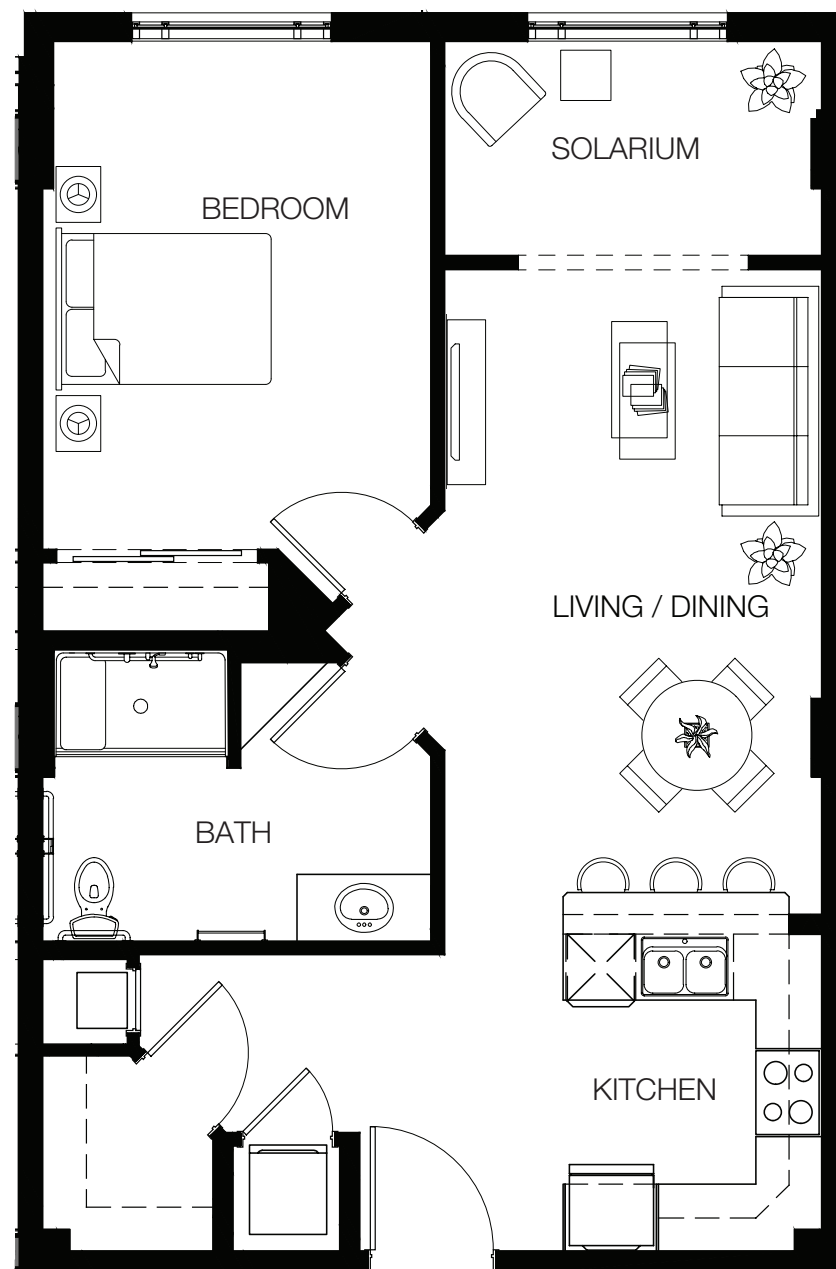
1 Bedroom | 1 Bathroom | Solarium | Storage



KEY PLAN

ROOM SIZES	±901 sqft
Bedroom	11'-8" X 15'-0"
Bath	11'-7" X 8'-8"
Living/ Dining	11'-3" X 19'-2"
Solarium	11'-3" X 6'-5"
Kitchen	7'-9" X 10'-0"

In our continuing effort to improve the units at Currie Green, the seller reserves the right to modify the interior & exterior design, specifications, location, size, design features, services, amenities and pricing without prior notice. This literature is for "marketing purposes" only and no representations of any type are made by this marketing material, which are subject to change without notice. All dimensions and square footages are approximate and modifications may vary by unit. NOT TO SCALE



TO LEARN MORE VISIT

CurrieGreen.ca

150 Dieppe Drive SW

Tina 403-369-6000

Marguerite 403-369-3000

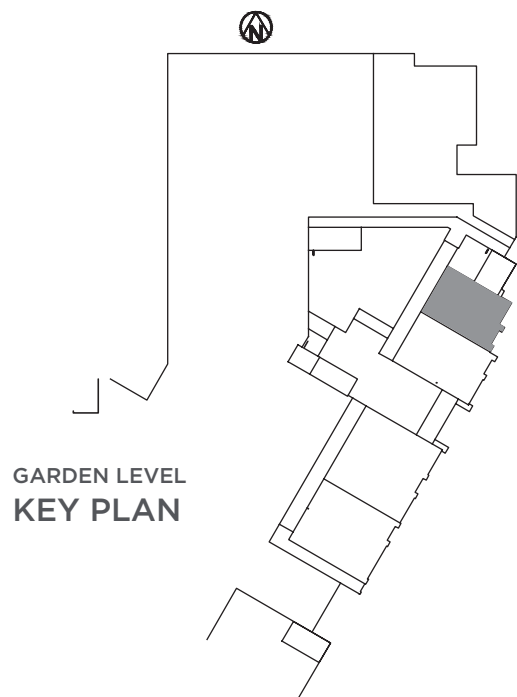
curriegreen@statesmangroup.com

The Campus of  
CurrieGreen

# DAISY\*

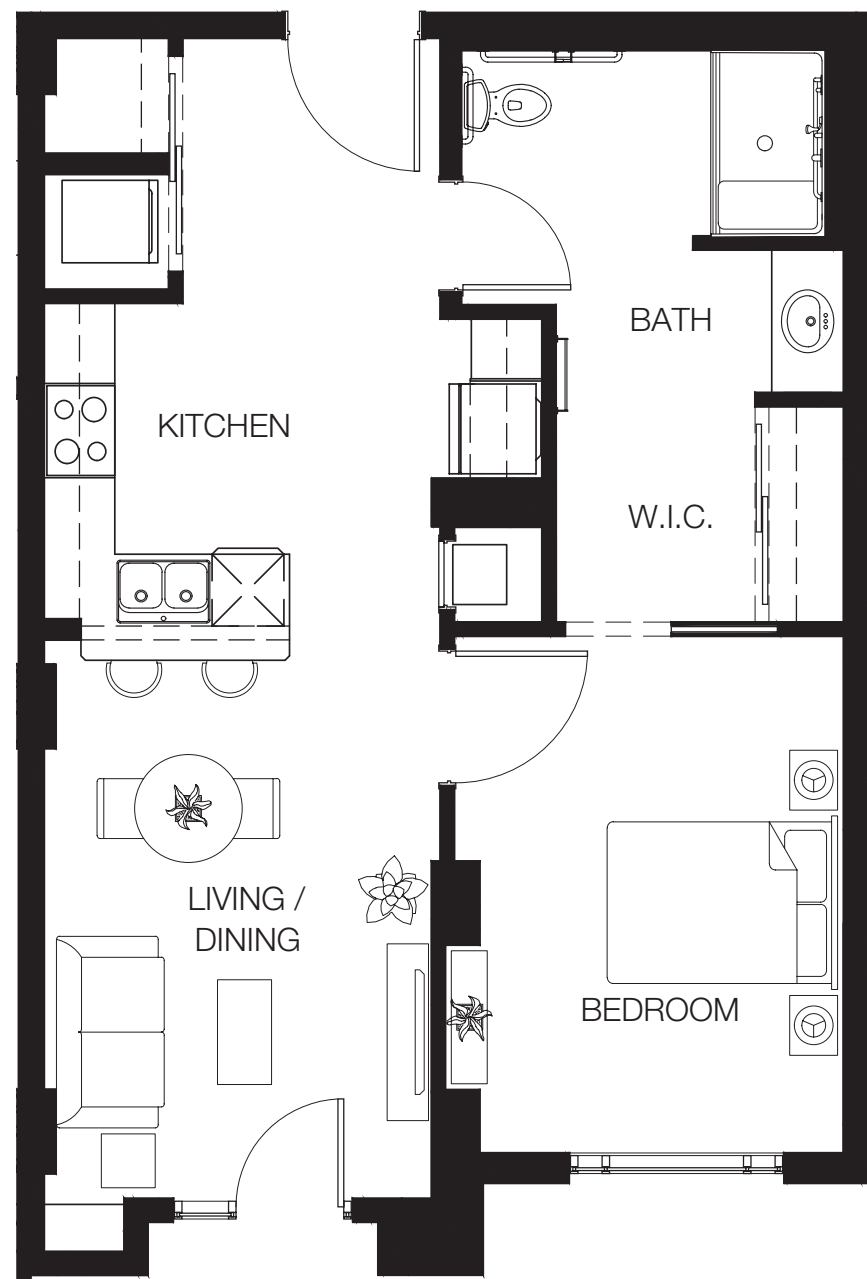
1 Bedroom | 1 Bathroom

\*Garden Level



ROOM SIZES	771 sqft
Bedroom	10'-10" X 14'-5"
Bath	10'-2" X 9'-7"
W.I.C.	8'-0" X 6'-0"
Living / Dining	10'-10" X 15'-0"
Kitchen	6'-10" X 9'-5"

In our continuing effort to improve the units at Currie Green, the seller reserves the right to modify the interior & exterior design, specifications, location, size, design features, services, amenities and pricing without prior notice. This literature is for "marketing purposes" only and no representations of any type are made by this marketing material, which are subject to change without notice. All dimensions and square footages are approximate and modifications may vary by unit. NOT TO SCALE



TO LEARN MORE VISIT

CurrieGreen.ca

150 Dieppe Drive SW

Tina 403-369-6000

Marguerite 403-369-3000

curriegreen@statesmangroup.com

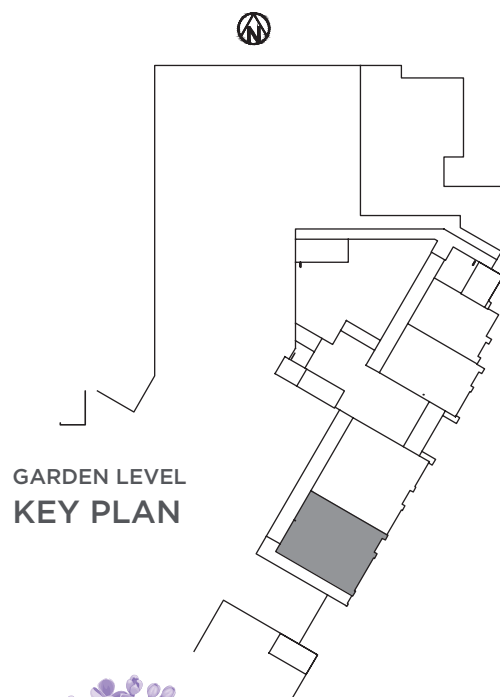


The Campus of  
CurrieGreen

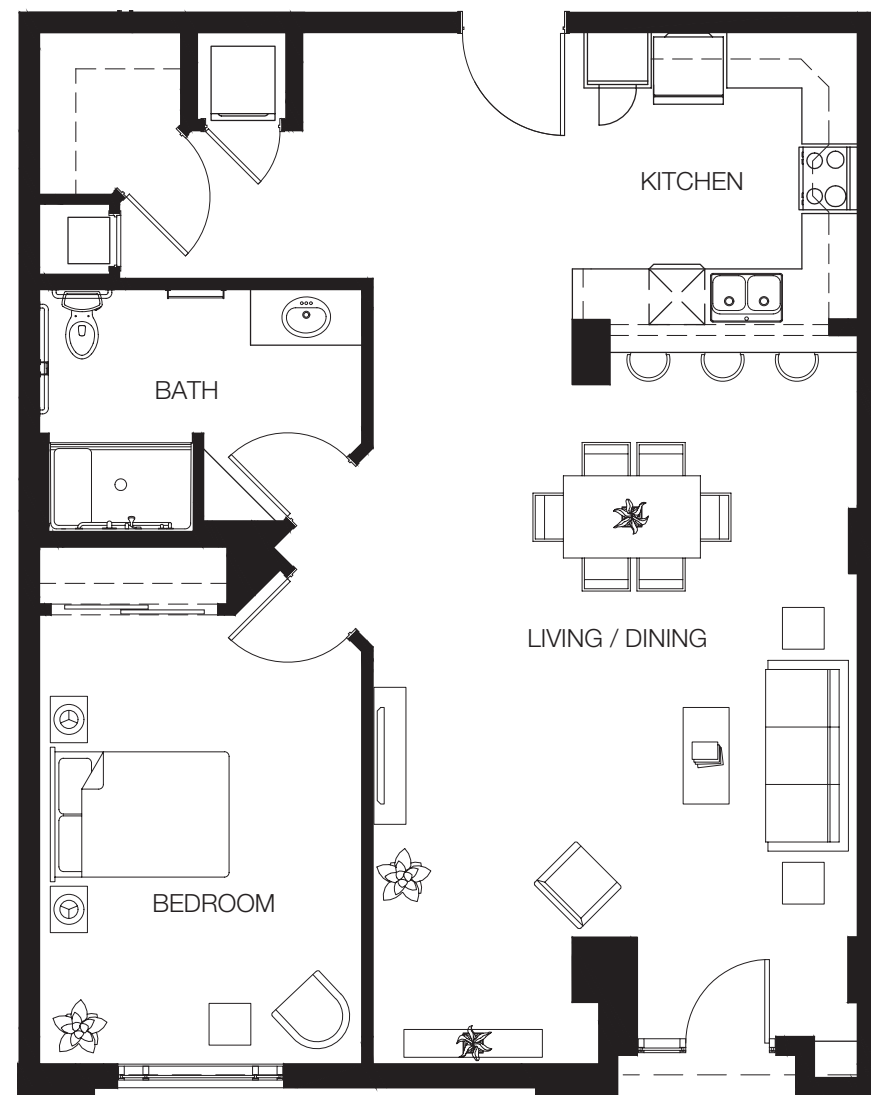
# LILAC\*

1 Bedroom | 1 Bathroom | Storage

\*Garden Level



ROOM SIZES	1,157 sqft
Bedroom	11'-7" X 16'-2"
Bath	11'-7" X 8'-8"
Living / Dining	17'-5" X 23'-6"
Kitchen	10'-2" X 11'-6"



In our continuing effort to improve the units at Currie Green, the seller reserves the right to modify the interior & exterior design, specifications, location, size, design features, services, amenities and pricing without prior notice. This literature is for "marketing purposes" only and no representations of any type are made by this marketing material, which are subject to change without notice. All dimensions and square footages are approximate and modifications may vary by unit. NOT TO SCALE

TO LEARN MORE VISIT

CurrieGreen.ca

150 Dieppe Drive SW

Tina 403-369-6000

Marguerite 403-369-3000

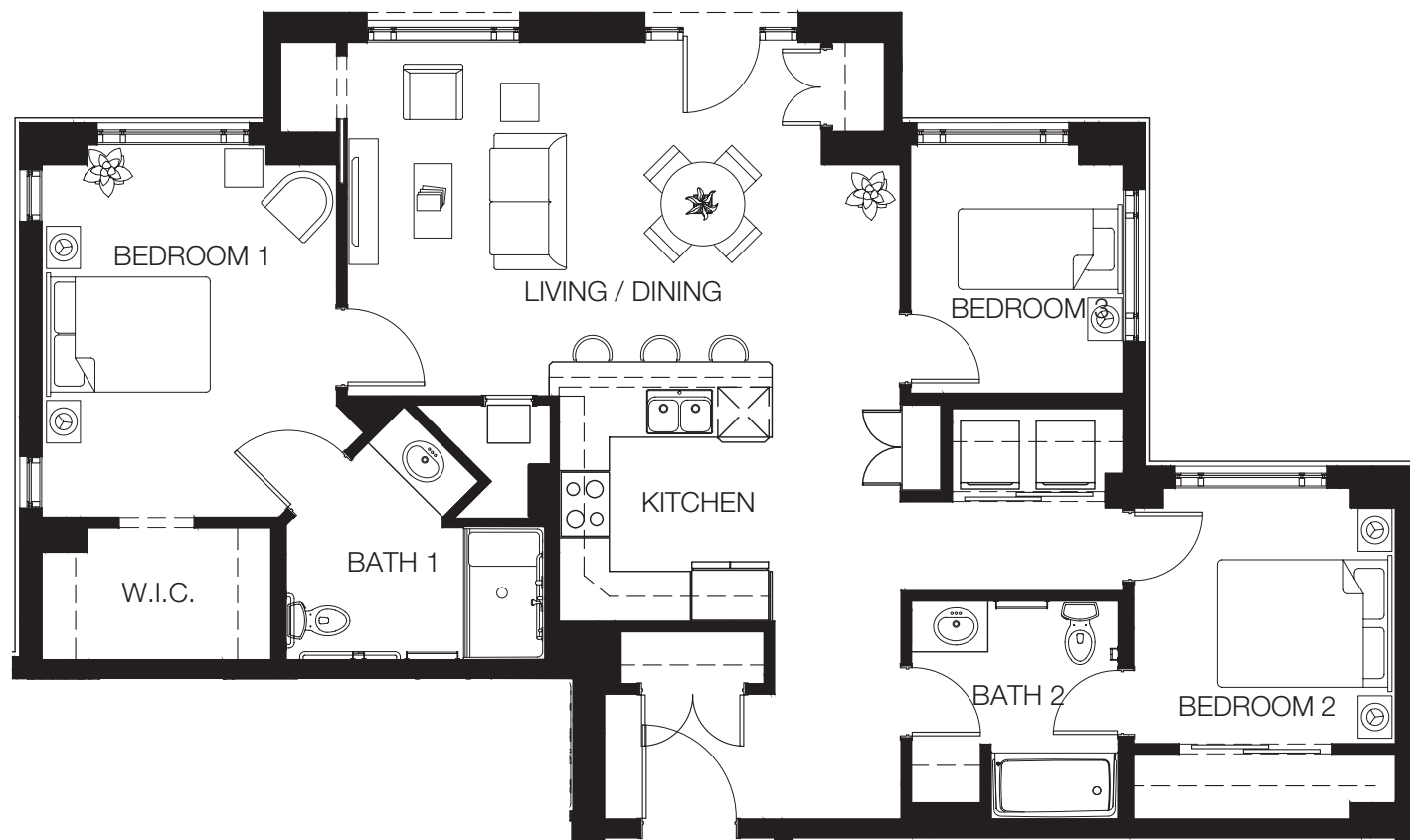
curriegreen@statesmangroup.com



# LILY<sup>MF</sup>

3 Bedroom | 2 Bathroom

Main Floor



## ROOM SIZES

1,334 sqft

Bedroom 1	11'-7" X 14'-7"	Bath 2	8'-2" X 8'-7"
Bath	1 10'-2" X 9'-11"	Living / Dining	18'-7" X 13'-2"
Bedroom 2	10'-4" X 10'-0"	Kitchen	8'-5" X 9'-7"
Bedroom 3	8'-4" X 9'-9"		

In our continuing effort to improve the units at Currie Green, the seller reserves the right to modify the interior & exterior design, specifications, location, size, design features, services, amenities and pricing without prior notice. This literature is for "marketing purposes" only and no representations of any type are made by this marketing material, which are subject to change without notice. All dimensions and square footages are approximate and modifications may vary by unit. NOT TO SCALE

TO LEARN MORE VISIT

CurrieGreen.ca

150 Dieppe Drive SW

Tina 403-369-6000

Marguerite 403-369-3000

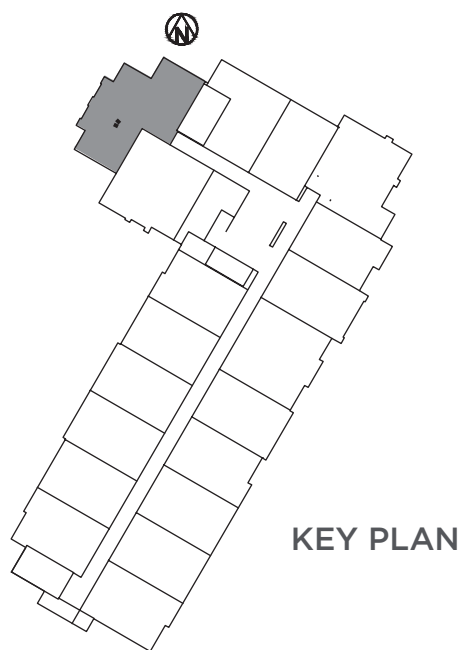
curriegreen@statesmangroup.com



The Campus of  
**CurrieGreen**

**LILY**

3 Bedroom | 3 Bathroom  
Laundry



**ROOM SIZES 1,568 sqft**

Bedroom 1 10'-6" X 13'-1"

W.I.C. 1 6'-7" X 6'-11"

Bath 1 12'-1" X 5'-0"

Bedroom 2 11'-7" X 14'-7"

W.I.C. 2 9'-0" X 5'-2"

Bath 2 10'-2" X 10'-0"

Living / Dining 21'-8" X 13'-11"

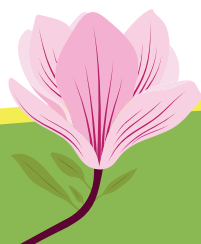
Kitchen 8'-4" X 10'-2"

Powder Rm. 6'-3" X 5'-6"

Laundry 8'-2" X 9'-1"

Bedroom 3 8'-4" X 12'-11"

In our continuing effort to improve the units at Currie Green, the seller reserves the right to modify the interior & exterior design, specifications, location, size, design features, services, amenities and pricing without prior notice. This literature is for "marketing purposes" only and no representations of any type are made by this marketing material, which are subject to change without notice. All dimensions and square footages are approximate and modifications may vary by unit. NOT TO SCALE



TO LEARN MORE VISIT

**CurrieGreen.ca**

150 Dieppe Drive SW

**Tina 403-369-6000**

**Marguerite 403-369-3000**

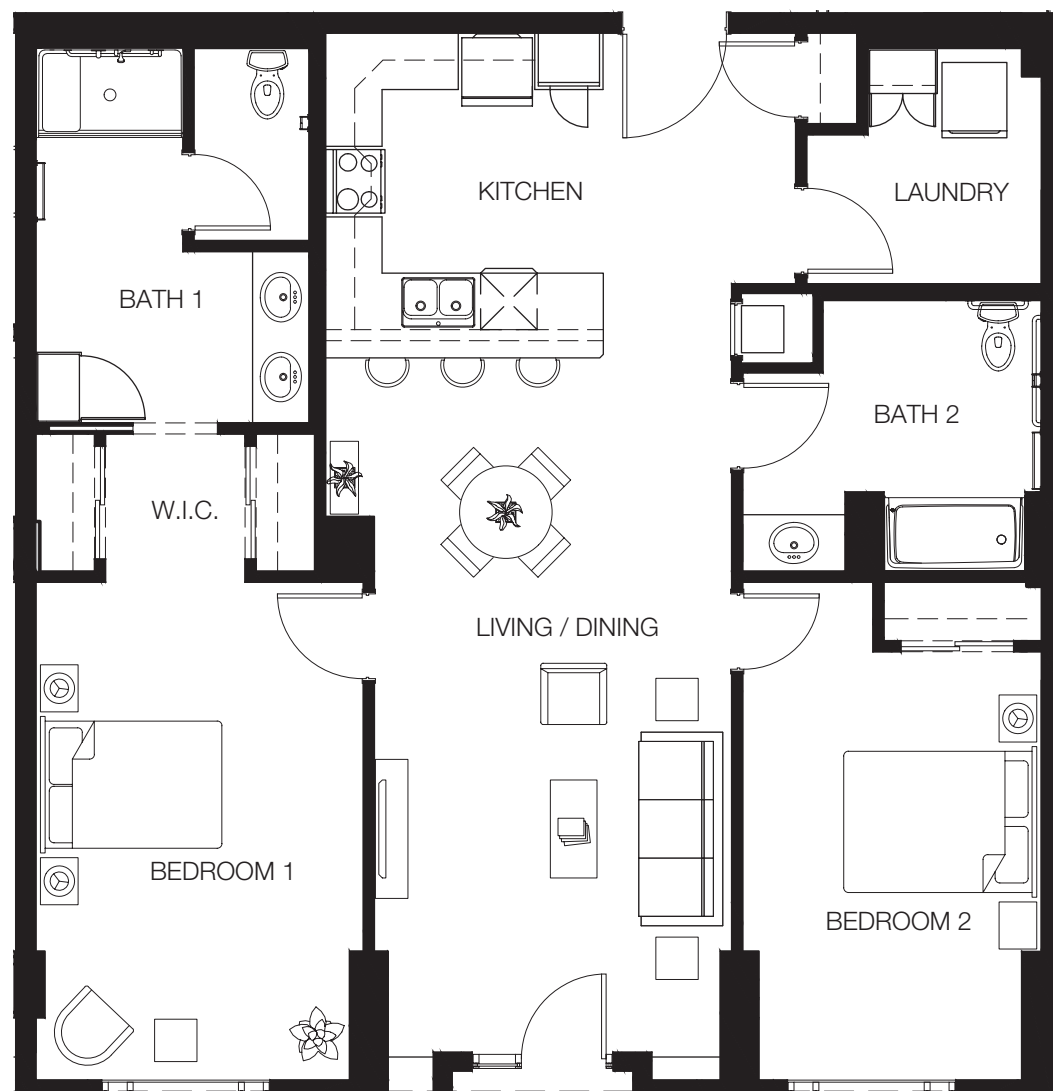
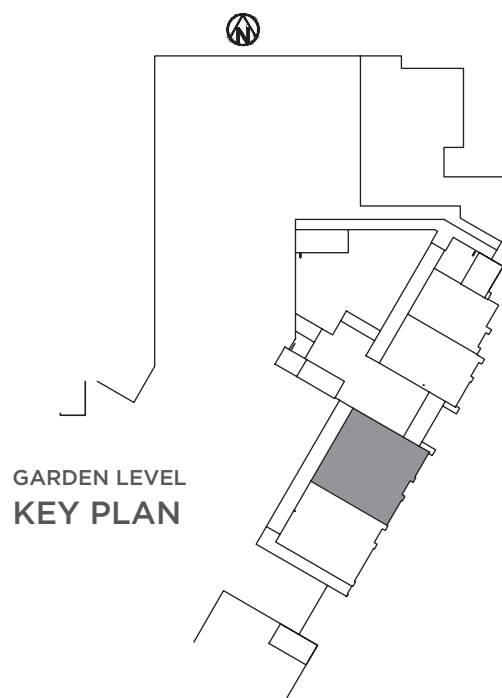
curriegreen@statesmangroup.com

The Campus of  
CurrieGreen

# MAGNOLIA\*

2 Bedroom | 2 Bathroom | Laundry

\*Garden Level

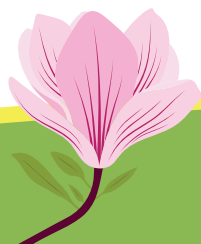


## ROOM SIZES

**1,396 sqft**

Bedroom	1 11'-7" X 17'-8"	Bath	2 10'-8" X 9'-7"
W.I.C.	9'-10" X 4'-10"	Living / Dining	12'-8" X 24'-7"
Bath	1 9'-9" X 13'-3"	Kitchen	9'-10" X 11'-6"
Bedroom	2 10'-8" X 17'-8"	Laundry	8'-4" X 8'-4"

In our continuing effort to improve the units at Currie Green, the seller reserves the right to modify the interior & exterior design, specifications, location, size, design features, services, amenities and pricing without prior notice. This literature is for "marketing purposes" only and no representations of any type are made by this marketing material, which are subject to change without notice. All dimensions and square footages are approximate and modifications may vary by unit. NOT TO SCALE



TO LEARN MORE VISIT

CurrieGreen.ca

150 Dieppe Drive SW

Tina 403-369-6000

Marguerite 403-369-3000

curriegreen@statesmangroup.com

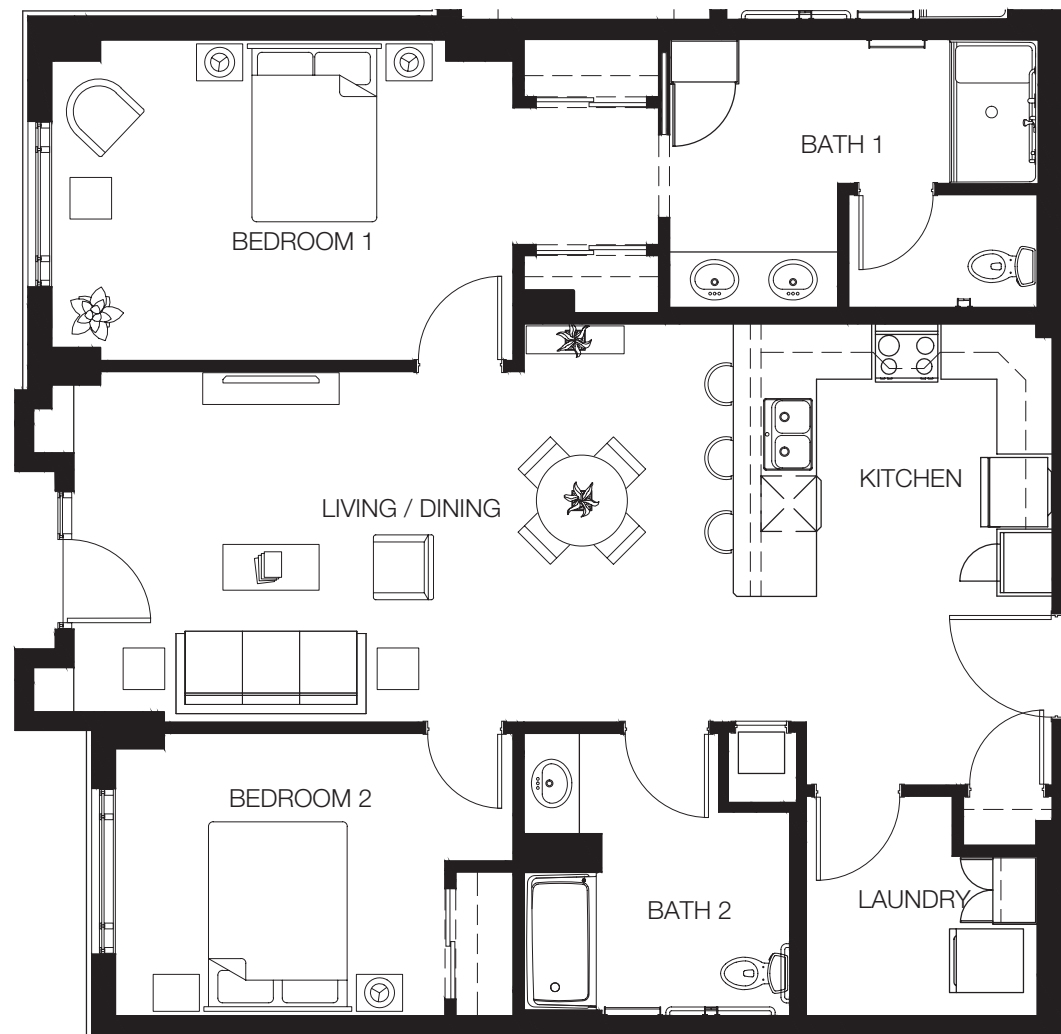
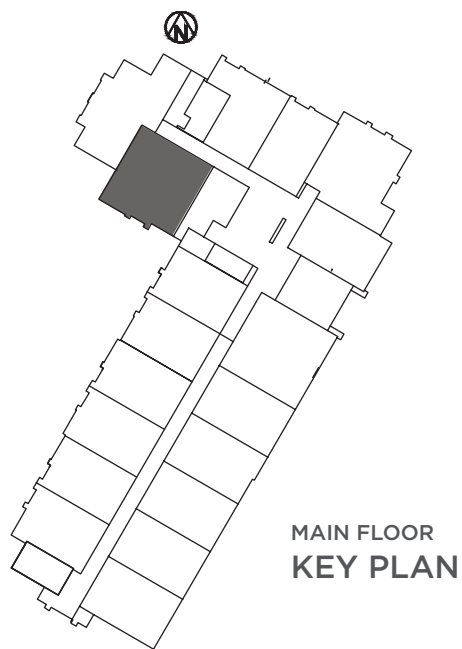


The Campus of  
CurrieGreen

# MAGNOLIA MF

2 Bedroom | 2 Bathroom | Laundry

Main Floor

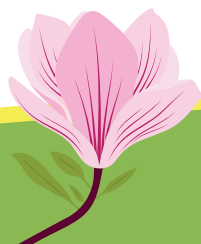


## ROOM SIZES

**1,330 sqft**

Bedroom 1	16'-8" X 11'-7"	Living / Dining	11'-3" X 18'-9"
Bath 1	13'-4" X 9'-8"	Kitchen	10'-11" X 9'-10"
Bedroom 2	14'-4" X 10'-4"	Laundry	8'-4" X 7'-11"
Bath 2	9'-7" X 10'-2"		

In our continuing effort to improve the units at Currie Green, the seller reserves the right to modify the interior & exterior design, specifications, location, size, design features, services, amenities and pricing without prior notice. This literature is for "marketing purposes" only and no representations of any type are made by this marketing material, which are subject to change without notice. All dimensions and square footages are approximate and modifications may vary by unit. NOT TO SCALE



TO LEARN MORE VISIT

CurrieGreen.ca

150 Dieppe Drive SW

Tina 403-369-6000

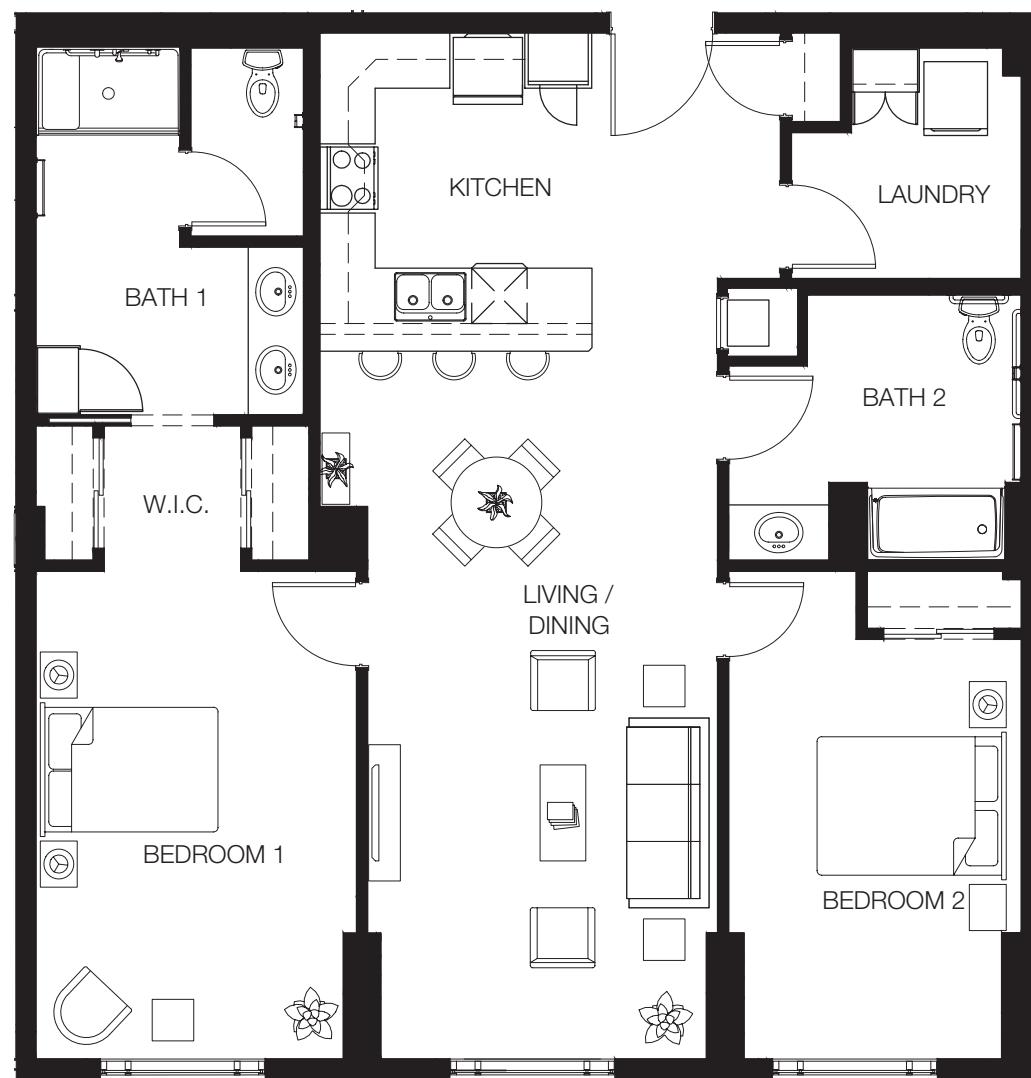
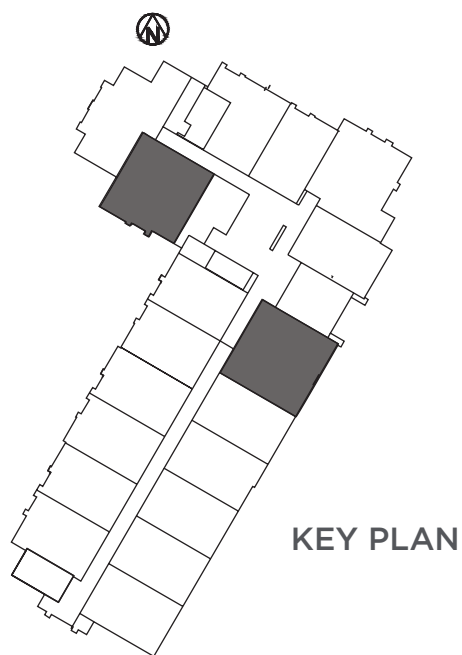
Marguerite 403-369-3000

curriegreen@statesmangroup.com

The Campus of  
CurrieGreen

# MAGNOLIA

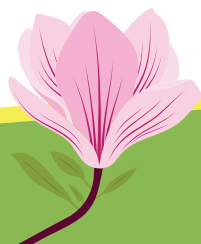
2 Bedroom | 2 Bathroom | Laundry



## ROOM SIZES ±1,404 sqft

Bedroom 1	11'-7" X 17'-8"	Bath 2	10'-7" X 9'-7"
W.I.C.	9'-10" X 5'-3"	Living / Dining	11'-3" X 18'-9"
Bath 1	9'-8" X 13'-4"	Kitchen	10'-11" X 9'-10"
Bedroom 2	10'-7" X 17'-8"	Laundry	8'-4" X 8'-4"

In our continuing effort to improve the units at Currie Green, the seller reserves the right to modify the interior & exterior design, specifications, location, size, design features, services, amenities and pricing without prior notice. This literature is for "marketing purposes" only and no representations of any type are made by this marketing material, which are subject to change without notice. All dimensions and square footages are approximate and modifications may vary by unit. NOT TO SCALE



TO LEARN MORE VISIT

CurrieGreen.ca

150 Dieppe Drive SW

Tina 403-369-6000

Marguerite 403-369-3000

curriegreen@statesmangroup.com

The Campus of  
CurrieGreen

# PEONY I

2 Bedroom | 2 Bathroom | Den | Foyer



KEY PLAN



## ROOM SIZES ±1,396 sqft

Bedroom 1	15'-0" X 10'-10"	Bath 2	7'-7" X 10'-6"
Bath 1	11'-6" X 8'-8"	Living	11'-8" X 13'-4"
W.I.C. 1	5'-7" X 9'-9"	Dining	12'-7" X 10'-8"
Bedroom 2	10'-10" X 11'-8"	Kitchen	8'-8" X 10'-3"
W.I.C. 2	5'-11" X 5'-8"	Foyer	9'-4" X 7'-9"

In our continuing effort to improve the units at Currie Green, the seller reserves the right to modify the interior & exterior design, specifications, location, size, design features, services, amenities and pricing without prior notice. This literature is for "marketing purposes" only and no representations of any type are made by this marketing material, which are subject to change without notice. All dimensions and square footages are approximate and modifications may vary by unit. NOT TO SCALE

TO LEARN MORE VISIT

CurrieGreen.ca

150 Dieppe Drive SW

Tina 403-369-6000

Marguerite 403-369-3000

curriegreen@statesmangroup.com

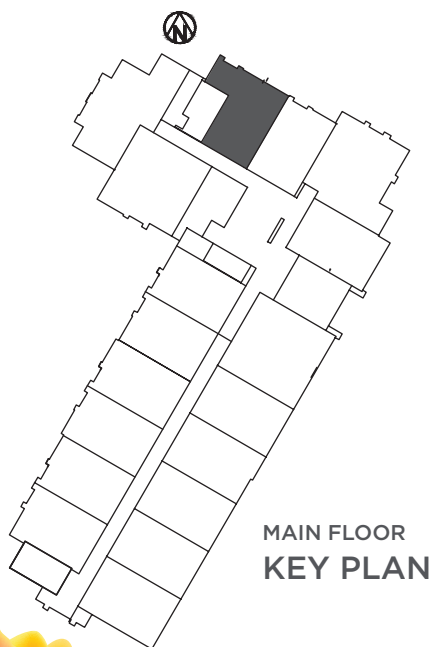


The Campus of  
CurrieGreen

# TULIP<sup>MF</sup>

1 Bedroom | 1 Bathroom | Foyer

Main Floor



MAIN FLOOR  
KEY PLAN

ROOM SIZES	996 sqft
Bedroom	11'-7" X 14'-7"
Bath	11'-7" X 8'-8"
Living / Dining	10'-11" X 24'-0"
Kitchen	6'-7" X 11'-5"
Foyer	9'-7" X 1'-3"



In our continuing effort to improve the units at Currie Green, the seller reserves the right to modify the interior & exterior design, specifications, location, size, design features, services, amenities and pricing without prior notice. This literature is for "marketing purposes" only and no representations of any type are made by this marketing material, which are subject to change without notice. All dimensions and square footages are approximate and modifications may vary by unit. NOT TO SCALE

TO LEARN MORE VISIT

CurrieGreen.ca

150 Dieppe Drive SW

Tina 403-369-6000

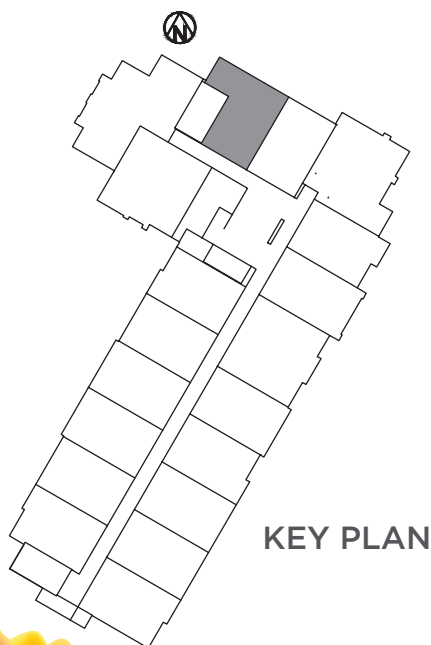
Marguerite 403-369-3000

curriegreen@statesmangroup.com

The Campus of  
CurrieGreen

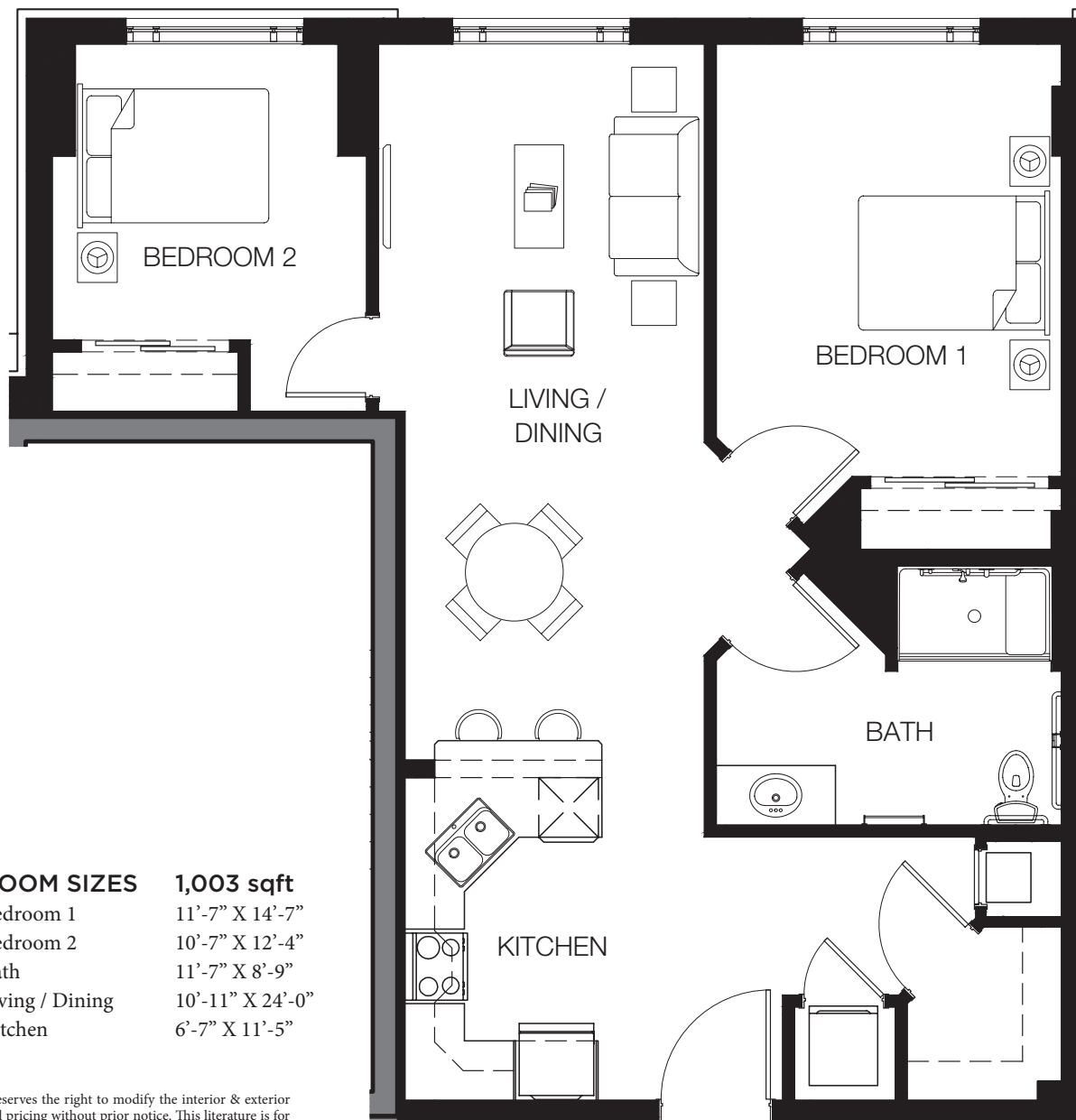
# TULIP

2 Bedroom | 1 Bathroom | Storage



KEY PLAN

ROOM SIZES	1,003 sqft
Bedroom 1	11'-7" X 14'-7"
Bedroom 2	10'-7" X 12'-4"
Bath	11'-7" X 8'-9"
Living / Dining	10'-11" X 24'-0"
Kitchen	6'-7" X 11'-5"



In our continuing effort to improve the units at Currie Green, the seller reserves the right to modify the interior & exterior design, specifications, location, size, design features, services, amenities and pricing without prior notice. This literature is for "marketing purposes" only and no representations of any type are made by this marketing material, which are subject to change without notice. All dimensions and square footages are approximate and modifications may vary by unit. NOT TO SCALE

TO LEARN MORE VISIT

CurrieGreen.ca

150 Dieppe Drive SW

Tina 403-369-6000

Marguerite 403-369-3000

curriegreen@statesmangroup.com