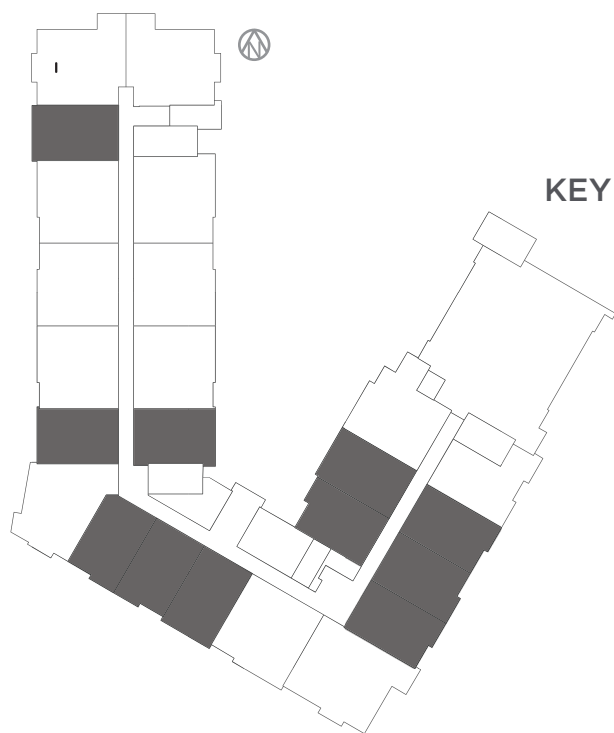


The Campus of
CurrieGreen

CARNATION

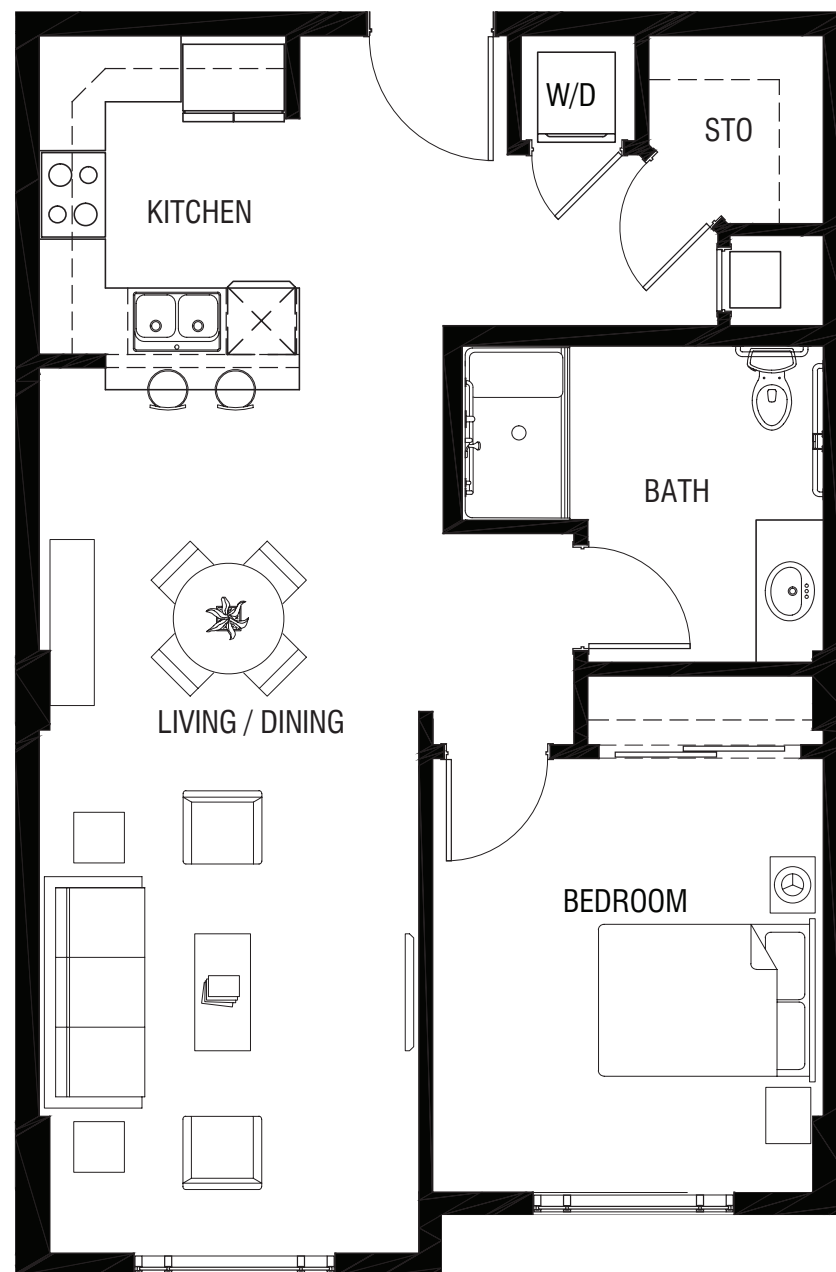
1 Bedroom | 1 Bathroom | Storage



KEY PLAN

ROOM SIZES	819 sqft
Bedroom	11'-8" x 12'-10"
Bath	11'-1" x 9'-5"
Living / Dining	11'-3" x 25'-7"
Kitchen	7'-9" x 10'-6"
Storage	5'-2" x 5'-7"

In our continuing effort to improve the units at Currie Green, the seller reserves the right to modify the interior & exterior design, specifications, location, size, design features, services, amenities and pricing without prior notice. This literature is for "marketing purposes" only and no representations of any type are made by this marketing material, which are subject to change without notice. All dimensions and square footages are approximate and modifications may vary by unit. NOT TO SCALE



TO LEARN MORE VISIT

CurrieGreen.ca

150 Dieppe Drive SW

Tina 403-369-6000

Marguerite 403-369-3000

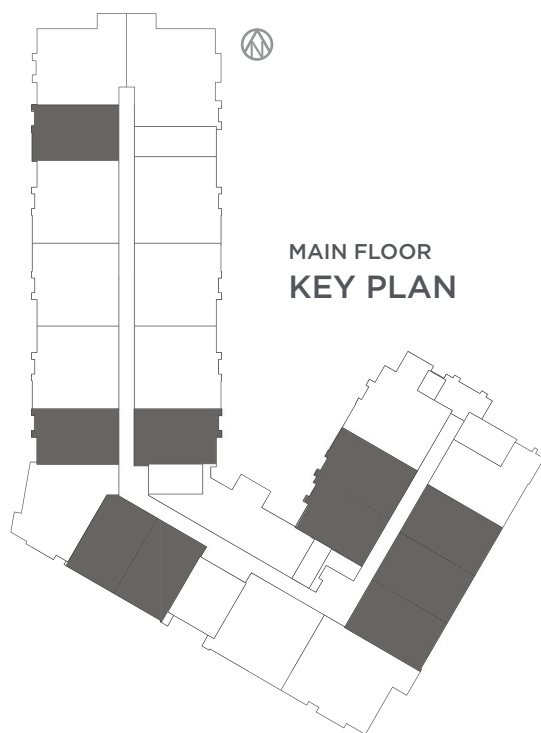
curriegreen@statesmangroup.com

The Campus of
CurrieGreen

CARNATION^{MF}

1 Bedroom | 1 Bathroom | Storage

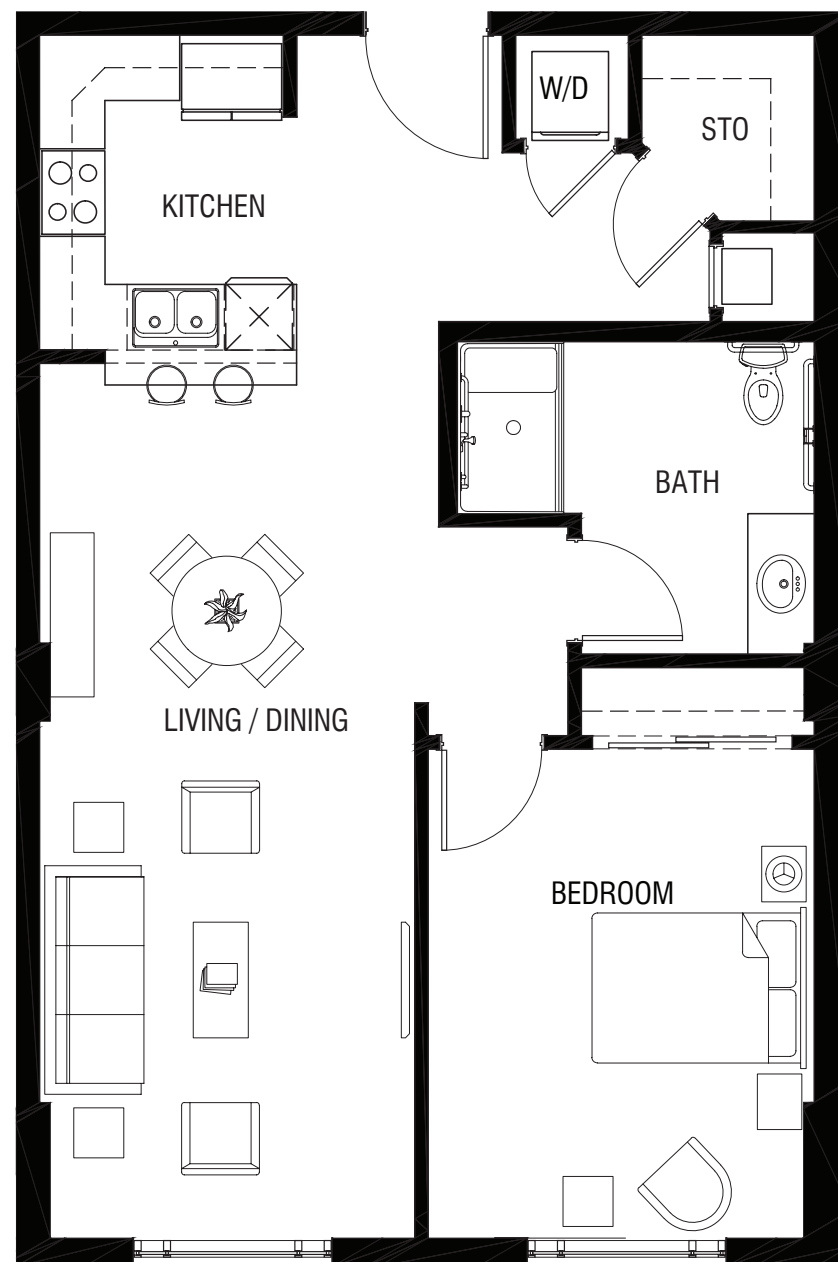
Main Floor



MAIN FLOOR
KEY PLAN

ROOM SIZES	847 sqft
Bedroom	11'-7" x 14'-8"
Bath	11'-1" x 9'-5"
Living / Dining	11'-3" x 26'-3"
Kitchen	7'-4" x 9'-5"
Storage	5'-2" x 5'-7"

In our continuing effort to improve the units at Currie Green, the seller reserves the right to modify the interior & exterior design, specifications, location, size, design features, services, amenities and pricing without prior notice. This literature is for "marketing purposes" only and no representations of any type are made by this marketing material, which are subject to change without notice. All dimensions and square footages are approximate and modifications may vary by unit. NOT TO SCALE



TO LEARN MORE VISIT

CurrieGreen.ca

150 Dieppe Drive SW

Tina 403-369-6000

Marguerite 403-369-3000

curriegreen@statesmangroup.com

The Campus of
CurrieGreen

CARNATION*

1 Bedroom | 1 Bathroom | Storage

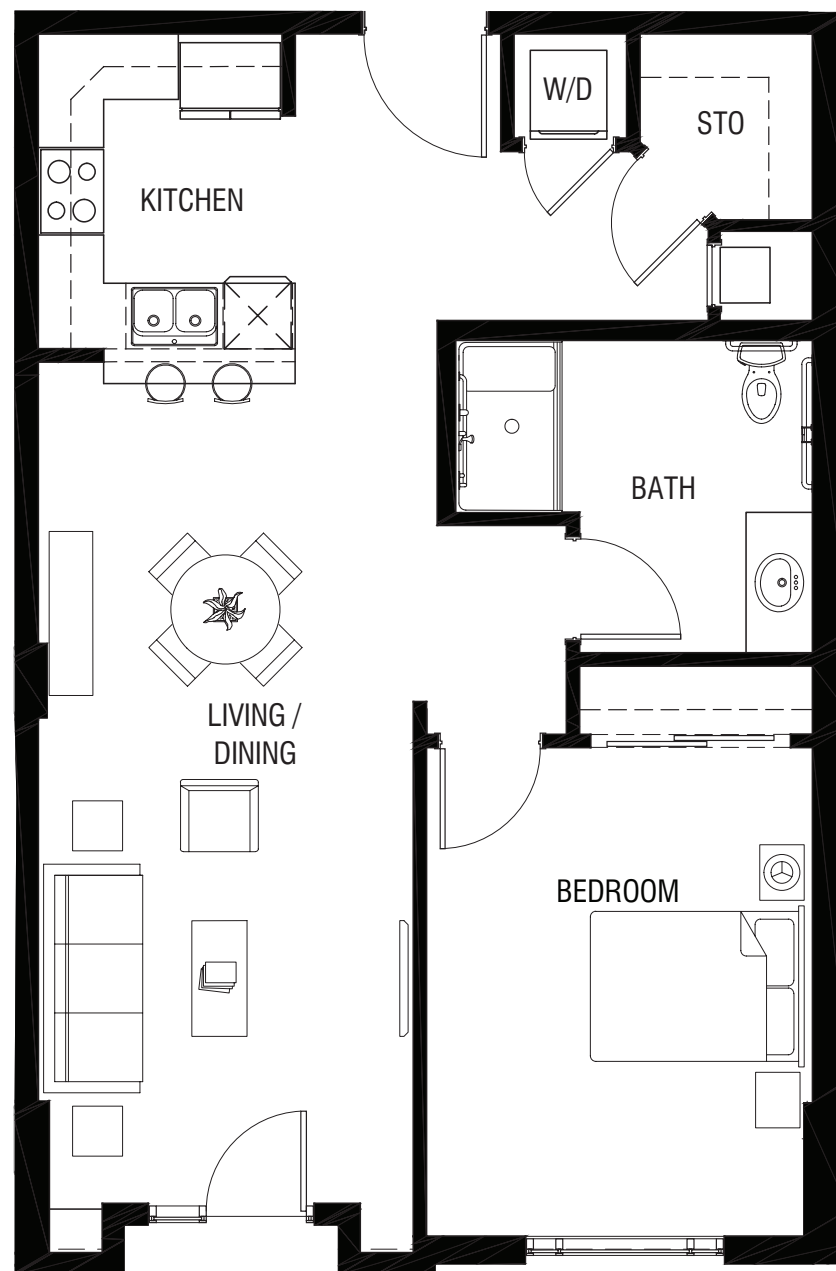
*Garden Level



GARDEN LEVEL
KEY PLAN

ROOM SIZES	847 sqft
Bedroom	11'-7" x 14'-8"
Bath	10'-9" x 9'-5"
Living / Dining	11'-3" x 25'-3"
Kitchen	7'-4" x 9'-5"
Storage	5'-2" x 5'-7"

In our continuing effort to improve the units at Currie Green, the seller reserves the right to modify the interior & exterior design, specifications, location, size, design features, services, amenities and pricing without prior notice. This literature is for "marketing purposes" only and no representations of any type are made by this marketing material, which are subject to change without notice. All dimensions and square footages are approximate and modifications may vary by unit. NOT TO SCALE



TO LEARN MORE VISIT

CurrieGreen.ca

150 Dieppe Drive SW

Tina 403-369-6000

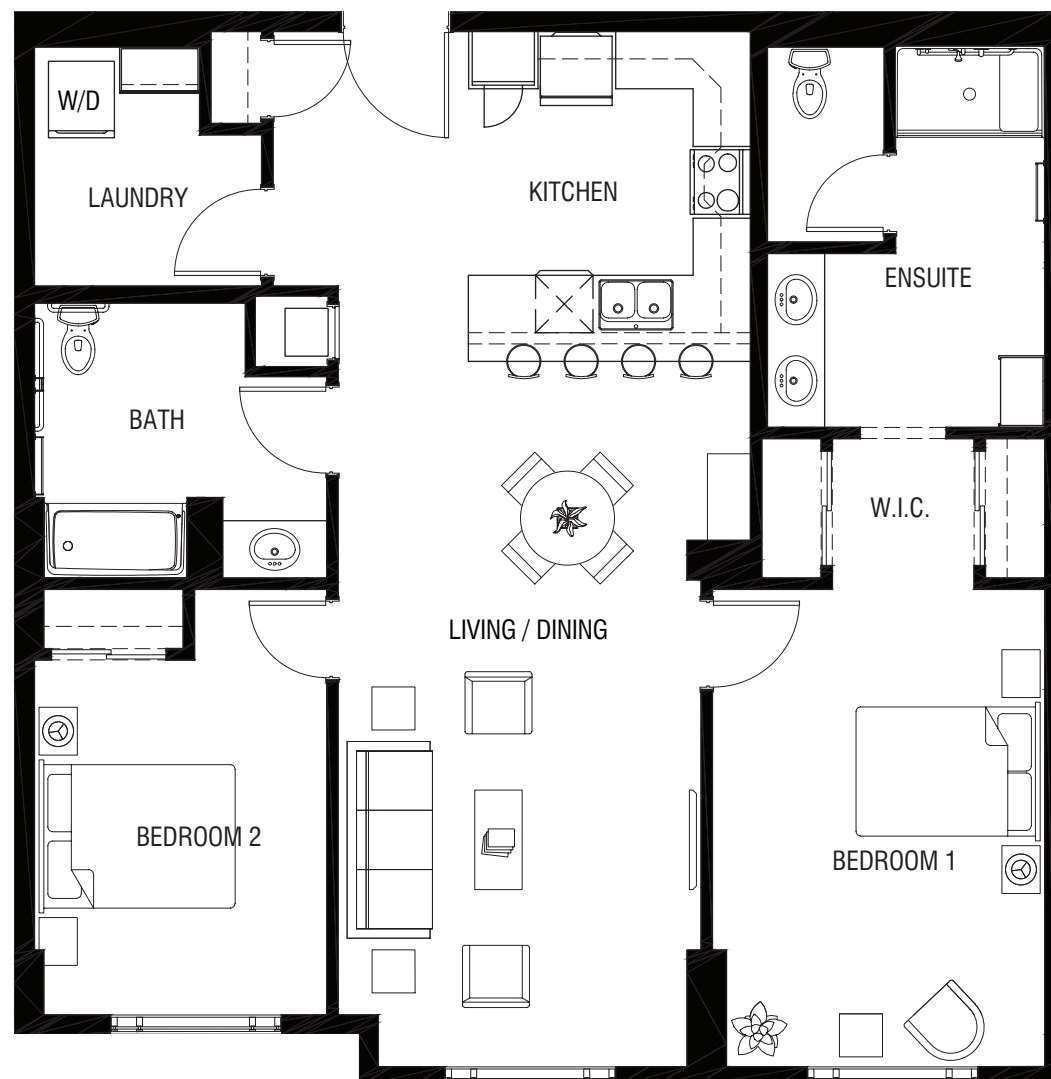
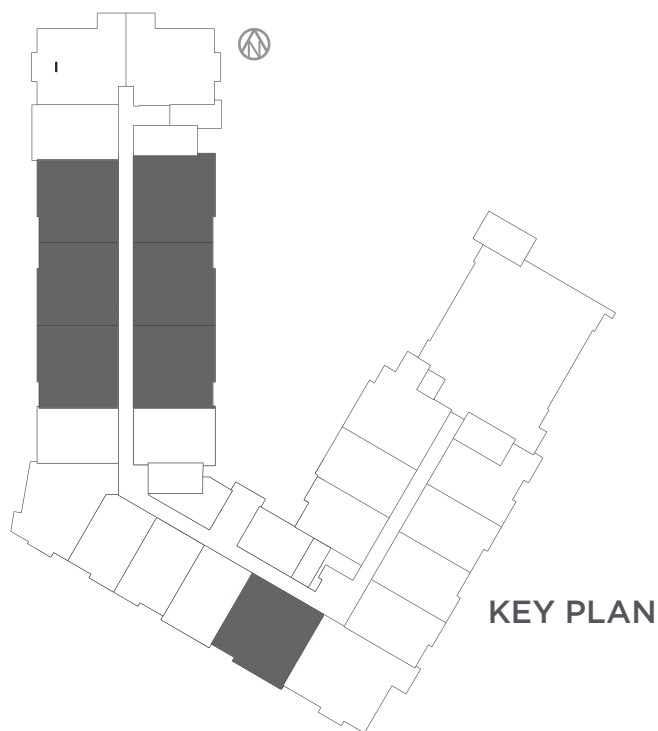
Marguerite 403-369-3000

curriegreen@statesmangroup.com

The Campus of
CurrieGreen

MAGNOLIA

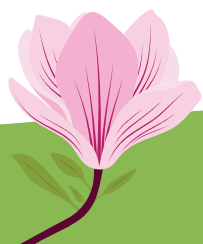
2 Bedroom | 2 Bathroom | Laundry



In our continuing effort to improve the units at Currie Green, the seller reserves the right to modify the interior & exterior design, specifications, location, size, design features, services, amenities and pricing without prior notice. This literature is for "marketing purposes" only and no representations of any type are made by this marketing material, which are subject to change without notice. All dimensions and square footages are approximate and modifications may vary by unit. NOT TO SCALE

ROOM SIZES 1,243 sqft

Bedroom 1	11'-7" x 16'-8"	Kitchen	9'-10" x 11'-6"
W.I.C.	9'-10" X 4'-11"	Bedroom 2	10'-1" x 11'-2"
Ensuite	9'-8" x 13'-3"	Bath	10'-2" x 9'-7"
Living / Dining	12'-9" x 24'-7"	Laundry	7'-11" x 8'-4"



TO LEARN MORE VISIT

CurrieGreen.ca

150 Dieppe Drive SW

Tina 403-369-6000

Marguerite 403-369-3000

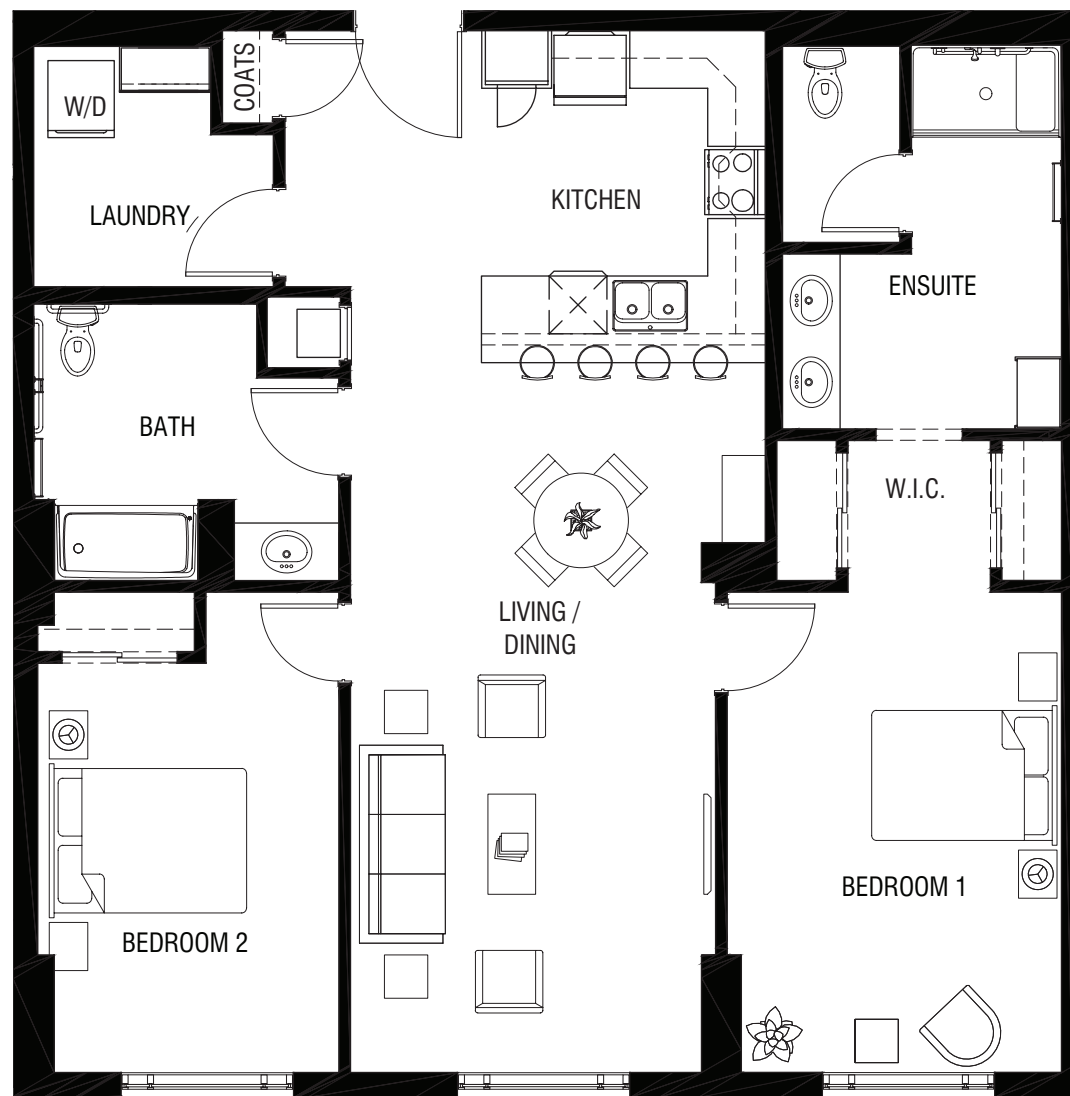
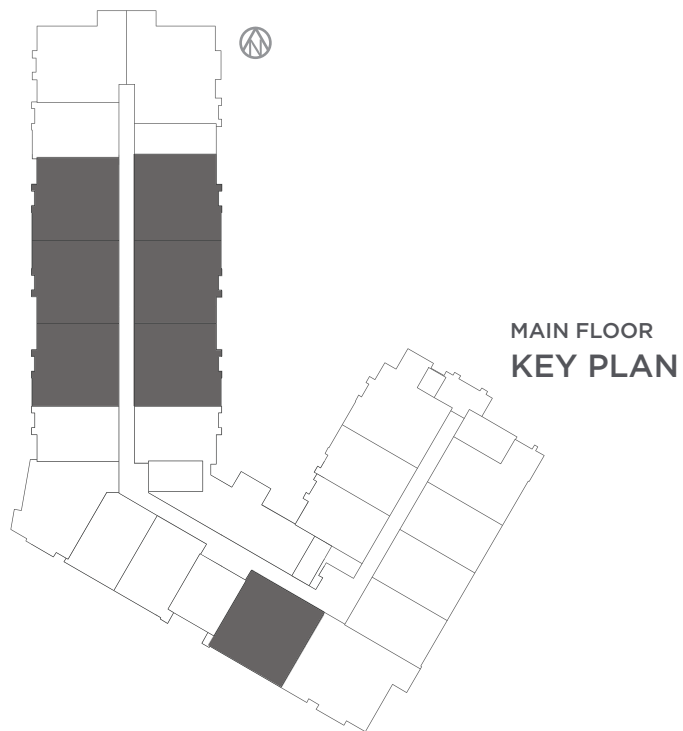
curriegreen@statesmangroup.com

The Campus of
CurrieGreen

MAGNOLIA^{MF}

2 Bedroom | 2 Bathroom | Laundry

Main Floor



ROOM SIZES

1,285 sqft

Bedroom 1

11'-7" x 16'-8"

W.I.C.

9'-10" X 4'-10"

Ensuite

9'-8" x 13'-3"

Bath

10'-7" x 9'-7"

Living / Dining

12'-9" x 24'-7"

Kitchen

9'-10" x 11'-6"

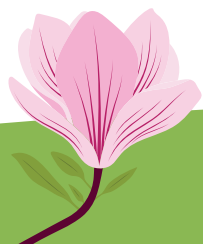
Bedroom 2

10'-6" x 12'-11"

Laundry

8'-4" x 8'-4"

In our continuing effort to improve the units at Currie Green, the seller reserves the right to modify the interior & exterior design, specifications, location, size, design features, services, amenities and pricing without prior notice. This literature is for "marketing purposes" only and no representations of any type are made by this marketing material, which are subject to change without notice. All dimensions and square footages are approximate and modifications may vary by unit. NOT TO SCALE



TO LEARN MORE VISIT

CurrieGreen.ca

150 Dieppe Drive SW

Tina 403-369-6000

Marguerite 403-369-3000

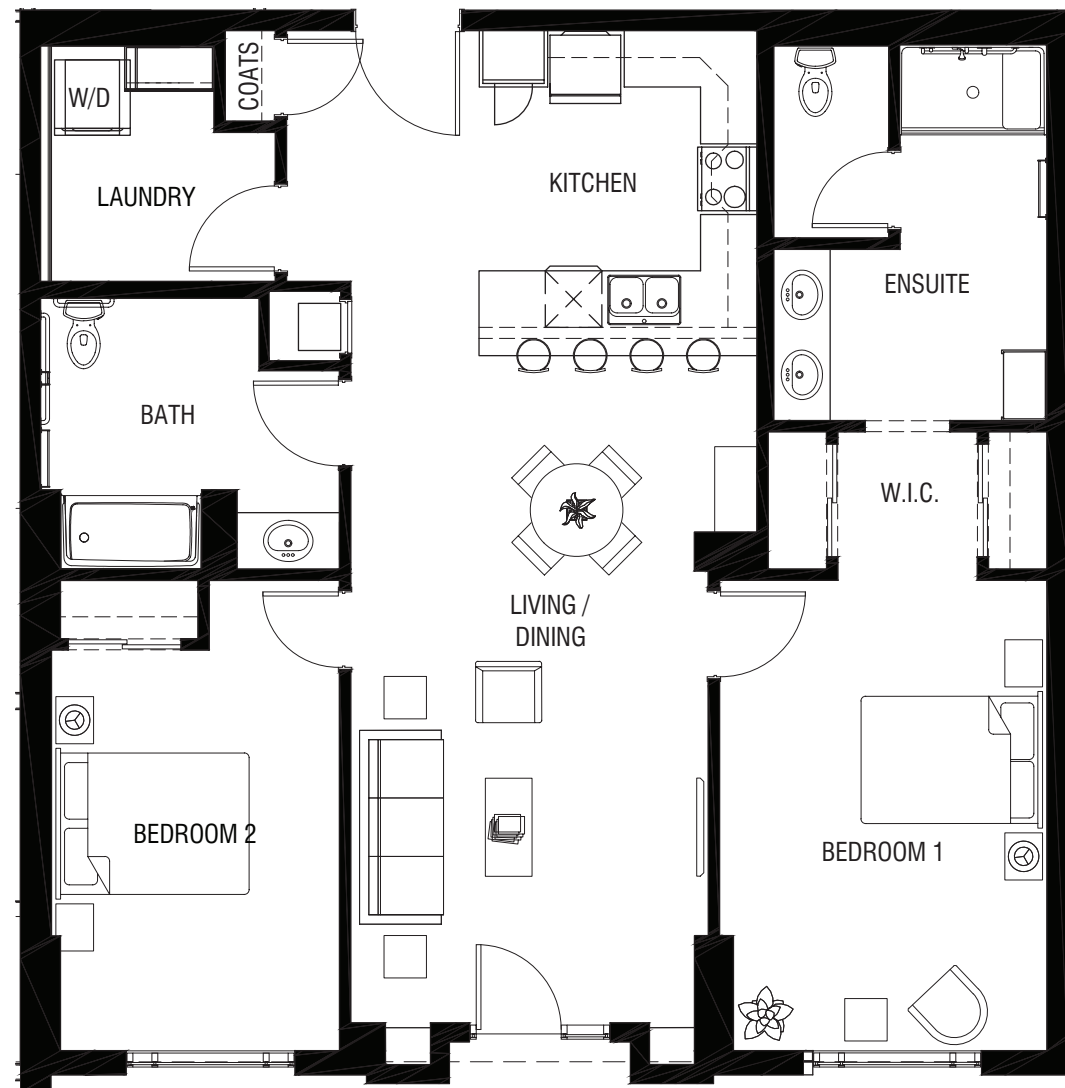
curriegreen@statesmangroup.com

The Campus of
CurrieGreen

MAGNOLIA*

2 Bedroom | 2 Bathroom | Laundry

*Garden Level



ROOM SIZES

1,276 sqft

Bedroom 1

11'-7" x 16'-8"

W.I.C.

9'-10" X 4'-10"

Ensuite

9'-8" x 13'-3"

Bath

10'-7" x 9'-8"

Living / Dining

12'-9" x 23'-7"

Kitchen

9'-10" x 11'-6"

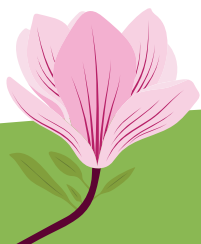
Bedroom 2

10'-3" x 14'-2"

Laundry

8'-4" x 8'-4"

In our continuing effort to improve the units at Currie Green, the seller reserves the right to modify the interior & exterior design, specifications, location, size, design features, services, amenities and pricing without prior notice. This literature is for "marketing purposes" only and no representations of any type are made by this marketing material, which are subject to change without notice. All dimensions and square footages are approximate and modifications may vary by unit. NOT TO SCALE



TO LEARN MORE VISIT

CurrieGreen.ca

150 Dieppe Drive SW

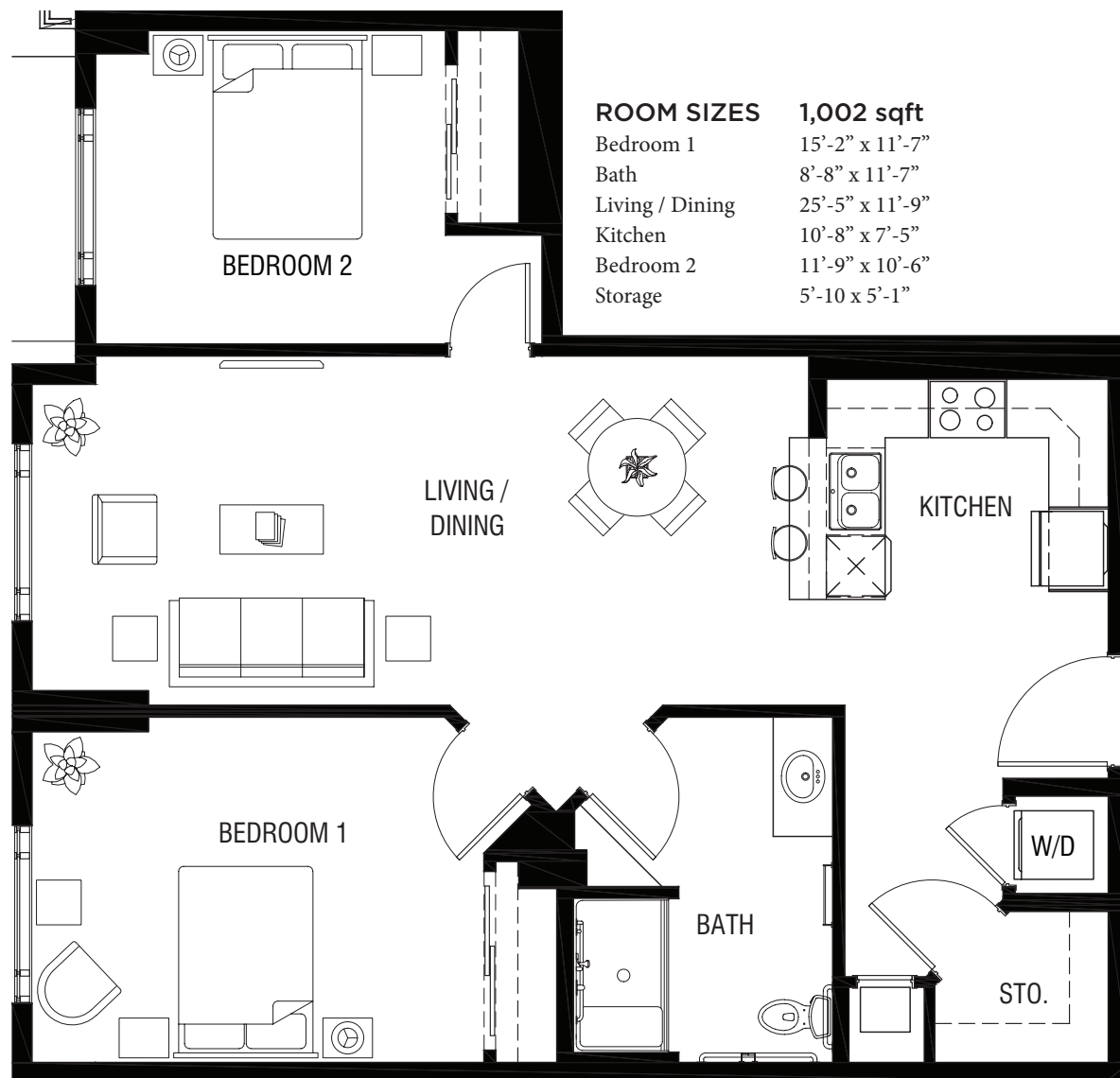
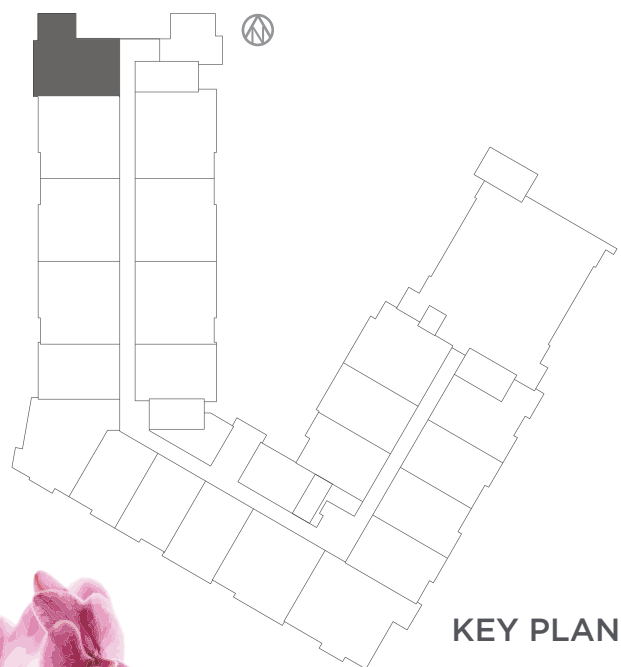
Tina 403-369-6000

Marguerite 403-369-3000

curriegreen@statesmangroup.com

The Campus of
CurrieGreen
ORCHID

2 Bedroom | 1 Bathroom | Storage



In our continuing effort to improve the units at Currie Green, the seller reserves the right to modify the interior & exterior design, specifications, location, size, design features, services, amenities and pricing without prior notice. This literature is for "marketing purposes" only and no representations of any type are made by this marketing material, which are subject to change without notice. All dimensions and square footages are approximate and modifications may vary by unit. NOT TO SCALE

TO LEARN MORE VISIT

CurrieGreen.ca

150 Dieppe Drive SW

Tina 403-369-6000

Marguerite 403-369-3000

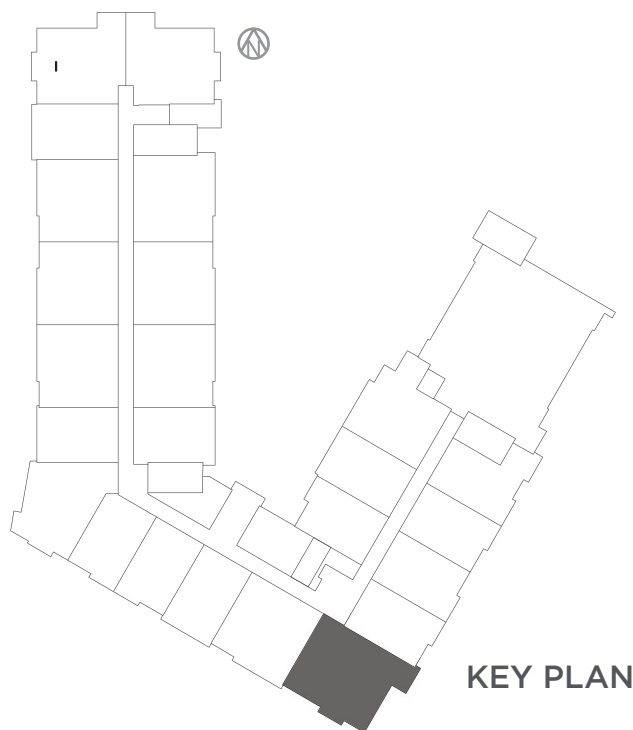
curriegreen@statesmangroup.com

The Campus of
CurrieGreen

PEONY I

2 Bedroom | 2 Bathroom

Den | Reading Room



ROOM SIZES 1,472 sqft

Bedroom 1	12'-7" x 10'-8"
W.I.C.1	6'-4" X 9'-11"
Ensuite	9'-10" x 10'-3"
Reading	7'-10" x 11'-3"
Living	11'-1" x 20'-10"
Dining	7'-6" x 11'-10"

Kitchen	7'-10" x 11'-6"
Den	8'-1" x 11'-5"
Bedroom 2	12'-0" x 11'-5"
W.I.C.2	7'-0" X 5'-4"
Bath	8'-0" x 9'-5"

In our continuing effort to improve the units at Currie Green, the seller reserves the right to modify the interior & exterior design, specifications, location, size, design features, services, amenities and pricing without prior notice. This literature is for "marketing purposes" only and no representations of any type are made by this marketing material, which are subject to change without notice. All dimensions and square footages are approximate and modifications may vary by unit. NOT TO SCALE

TO LEARN MORE VISIT

CurrieGreen.ca

150 Dieppe Drive SW

Tina 403-369-6000

Marguerite 403-369-3000

curriegreen@statesmangroup.com

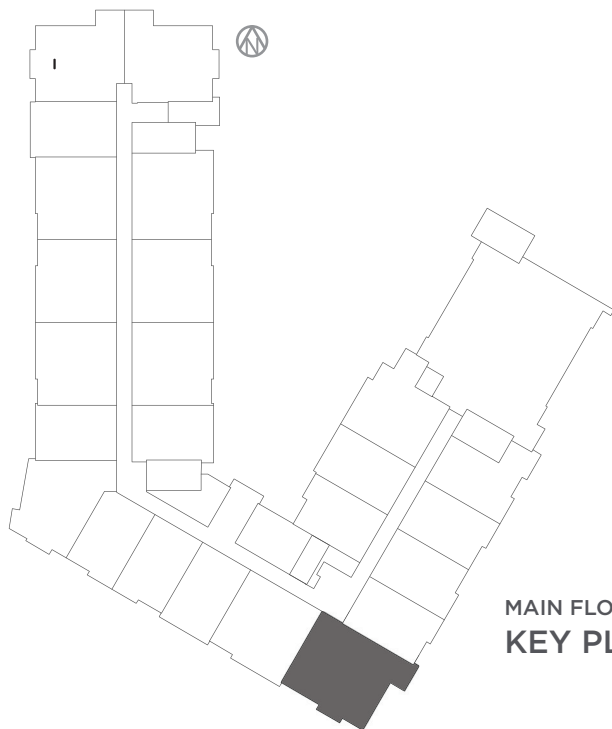


The Campus of
CurrieGreen

PEONY I MF

2 Bedroom | 2 Bathroom | Den

Main Floor



ROOM SIZES 1,492 sqft

Bedroom 1	12'-7" x 10'-8"	Kitchen	7'-10" x 11'-6"
W.I.C.1	6'-4" x 9'-11"	Den	8'-4" x 11'-5"
Ensuite	9'-10" x 10'-3"	Bedroom 2	11'-11" x 13'-2"
Bath	10'-9" x 9'-5"	W.I.C.2	7'-0" x 5'-4"
Living	11'-1" x 20'-10"	BATH	8'-0" x 9'-5"
Dining	7'-6" x 11'-10"		

In our continuing effort to improve the units at Currie Green, the seller reserves the right to modify the interior & exterior design, specifications, location, size, design features, services, amenities and pricing without prior notice. This literature is for "marketing purposes" only and no representations of any type are made by this marketing material, which are subject to change without notice. All dimensions and square footages are approximate and modifications may vary by unit. NOT TO SCALE

TO LEARN MORE VISIT

CurrieGreen.ca

150 Dieppe Drive SW

Tina 403-369-6000

Marguerite 403-369-3000

curriegreen@statesmangroup.com



The Campus of
CurrieGreen

PEONY I*

2 Bedroom | 2 Bathroom | Den

*Garden Level



ROOM SIZES 1,480 sqft

Bedroom 1	12'-8" x 10'-8"	Kitchen	7'-10" x 11'-6"
W.I.C.1	6'-4" X 9'-11"	Den	8'-4" x 11'-5"
Ensuite	9'-10" x 10'-3"	Bedroom 2	11'-11" x 13'-2"
Living	11'-1" x 20'-10"	W.I.C.2	7'-0" X 5'-4"
Dining	7'-11" x 11'-10"	Bath	8'-0" x 9'-5"

In our continuing effort to improve the units at Currie Green, the seller reserves the right to modify the interior & exterior design, specifications, location, size, design features, services, amenities and pricing without prior notice. This literature is for "marketing purposes" only and no representations of any type are made by this marketing material, which are subject to change without notice. All dimensions and square footages are approximate and modifications may vary by unit. NOT TO SCALE

TO LEARN MORE VISIT

CurrieGreen.ca

150 Dieppe Drive SW

Tina 403-369-6000

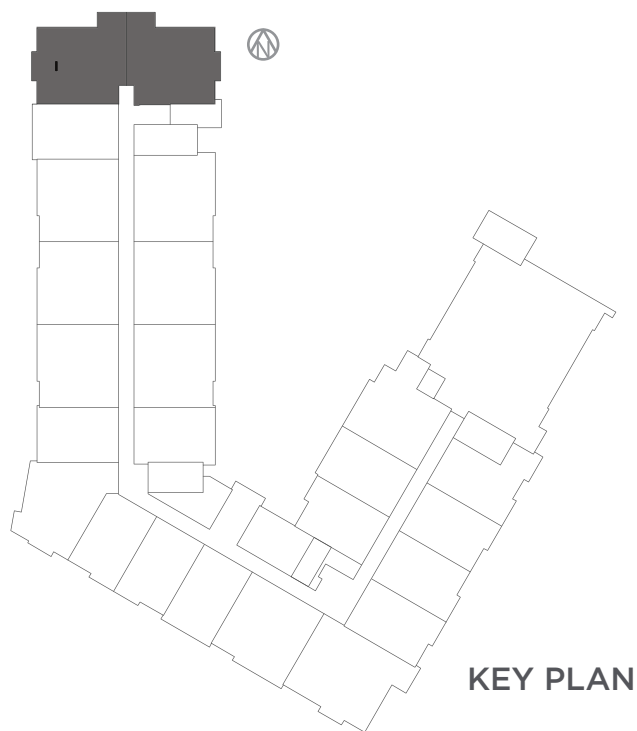
Marguerite 403-369-3000

curriegreen@statesmangroup.com



PEONY II

2 Bedroom | 2 Bathroom | Den



ROOM SIZES		1,271 sqft	
Bedroom 2	11'-6" x 10'-10"	Kitchen	10'-2" x 8'-5"
W.I.C.2	9'-9" x 5'-6"	Den	9'-7" x 9'-4"
Bath	10'-6" x 7'-11"	Bedroom 1	11'-7" x 14'-4"
Living / Dining	18'-7" x 11'-0"	W.I.C.1	5'-8" x 5'-11"

In our continuing effort to improve the units at Currie Green, the seller reserves the right to modify the interior & exterior design, specifications, location, size, design features, services, amenities and pricing without prior notice. This literature is for "marketing purposes" only and no representations of any type are made by this marketing material, which are subject to change without notice. All dimensions and square footages are approximate and modifications may vary by unit. NOT TO SCALE

TO LEARN MORE VISIT

CurrieGreen.ca

150 Dieppe Drive SW

Tina 403-369-6000

Marguerite 403-369-3000

curriegreen@statesmangroup.com

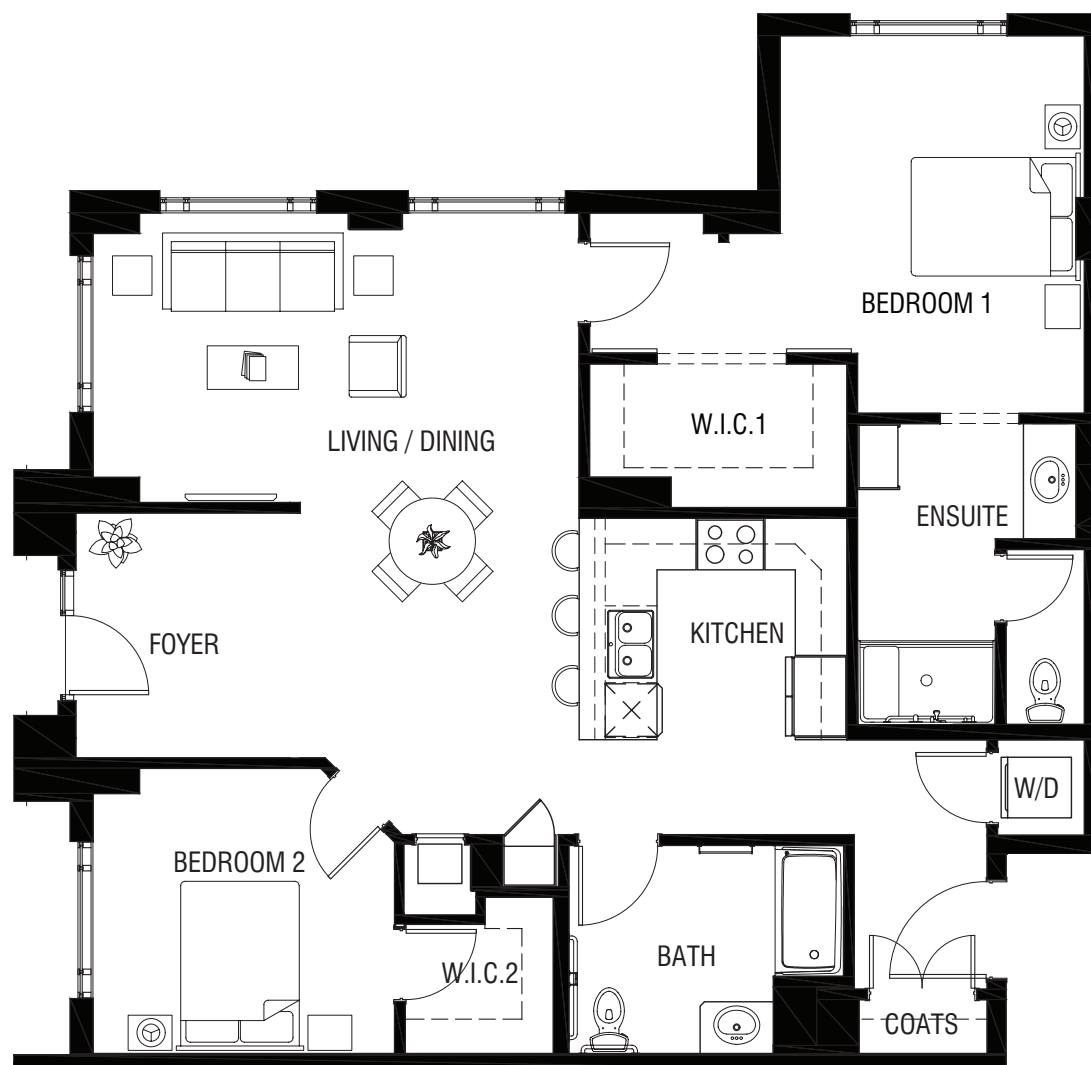
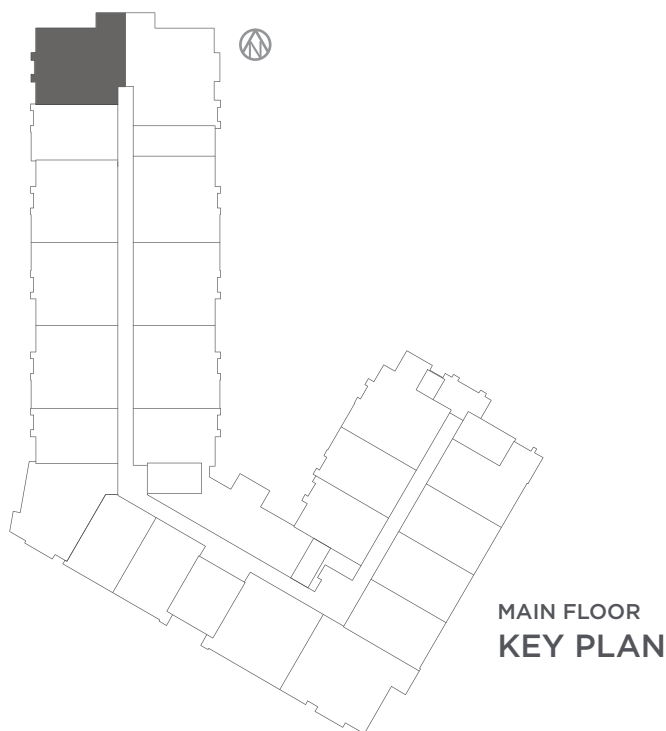


The Campus of
CurrieGreen

PEONY II^{MF}

2 Bedroom | 2 Bathroom | Den

Main Floor



ROOM SIZES 1,255 sqft

Bedroom 2	11'-6" x 10'-10"	Den	8'-4" x 11'-5"
W.I.C.2	5'-8" X 5'-11"	Bedroom 1	11'-7" x 14'-4"
Bath	10'-6" x 7'-11"	W.I.C.1	9'-9" X 5'-6"
Living / Dining	18'-7" x 11'-0"	Ensuite	8'-8" x 11'-5"
Kitchen	10'-5" x 8'-8"		

In our continuing effort to improve the units at Currie Green, the seller reserves the right to modify the interior & exterior design, specifications, location, size, design features, services, amenities and pricing without prior notice. This literature is for "marketing purposes" only and no representations of any type are made by this marketing material, which are subject to change without notice. All dimensions and square footages are approximate and modifications may vary by unit. NOT TO SCALE

TO LEARN MORE VISIT

CurrieGreen.ca

150 Dieppe Drive SW

Tina 403-369-6000

Marguerite 403-369-3000

curriegreen@statesmangroup.com



The Campus of
CurrieGreen

POPPY*

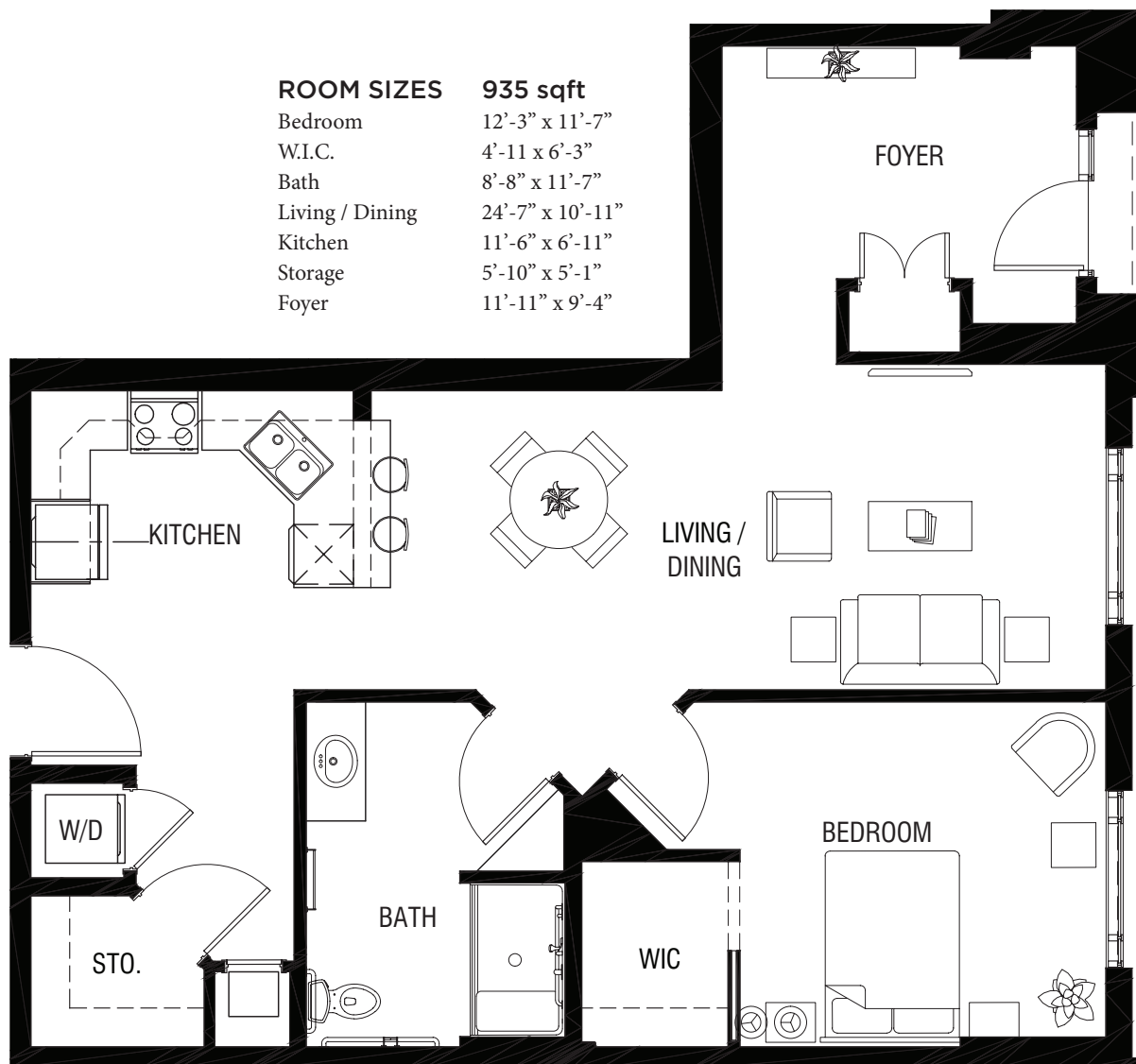
1 Bedroom | 1 Bathroom | Foyer

*Garden Level

ROOM SIZES

935 sqft

Bedroom	12'-3" x 11'-7"
W.I.C.	4'-11" x 6'-3"
Bath	8'-8" x 11'-7"
Living / Dining	24'-7" x 10'-11"
Kitchen	11'-6" x 6'-11"
Storage	5'-10" x 5'-1"
Foyer	11'-11" x 9'-4"



GARDEN LEVEL
KEY PLAN



In our continuing effort to improve the units at Currie Green, the seller reserves the right to modify the interior & exterior design, specifications, location, size, design features, services, amenities and pricing without prior notice. This literature is for "marketing purposes" only and no representations of any type are made by this marketing material, which are subject to change without notice. All dimensions and square footages are approximate and modifications may vary by unit. NOT TO SCALE

TO LEARN MORE VISIT

CurrieGreen.ca

150 Dieppe Drive SW

Tina 403-369-6000

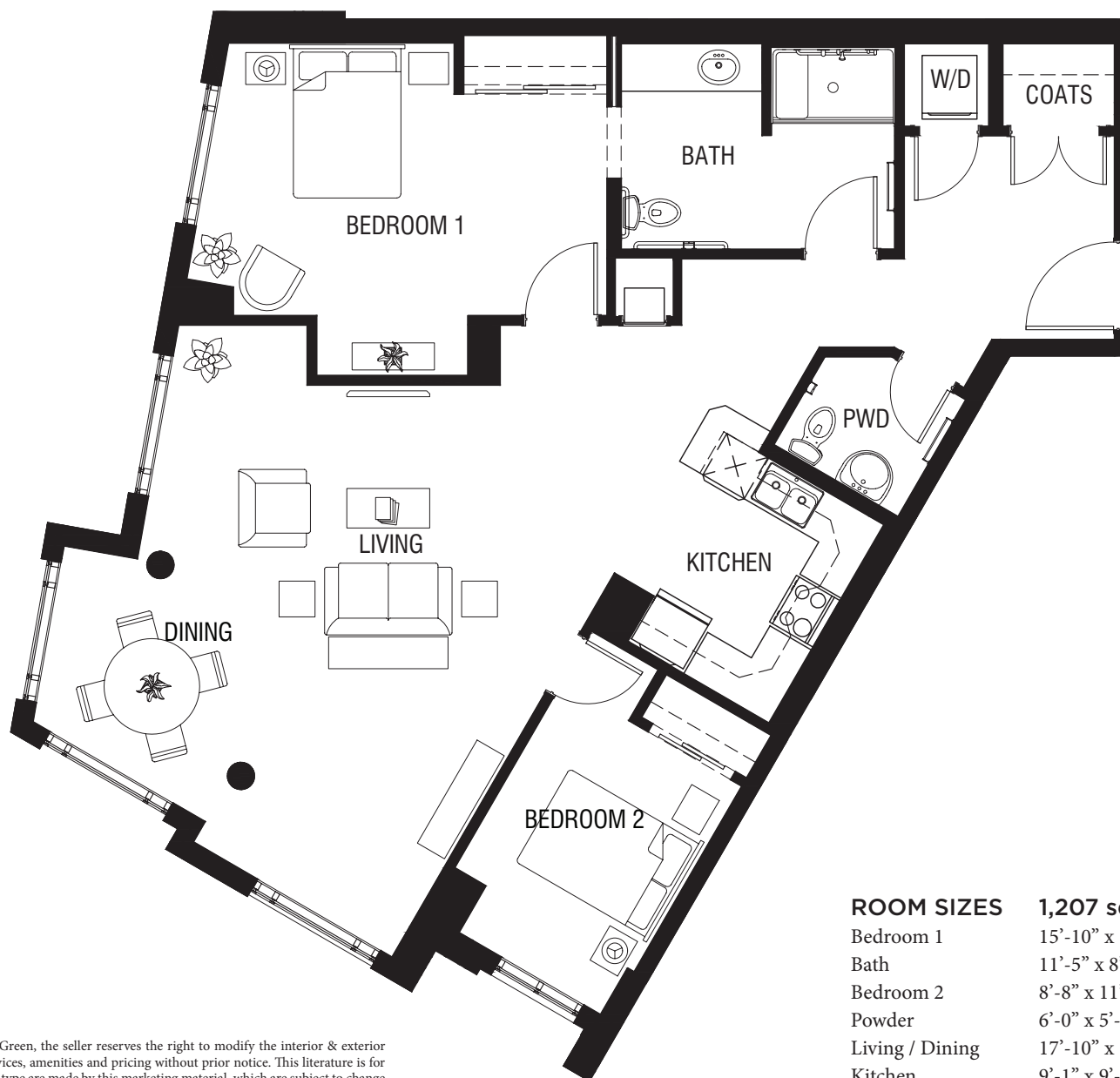
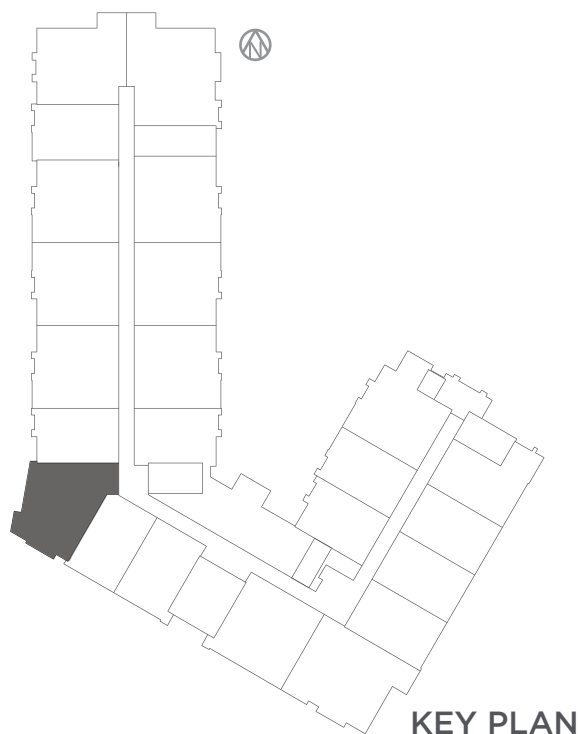
Marguerite 403-369-3000

curriegreen@statesmangroup.com

The Campus of
CurrieGreen

ROSE

2 Bedroom | 1 ½ Bathroom



ROOM SIZES		1,207 sqft
Bedroom 1	15'-10" x 11'-5"	
Bath	11'-5" x 8'-7"	
Bedroom 2	8'-8" x 11'-3"	
Powder	6'-0" x 5'-8"	
Living / Dining	17'-10" x 18'-7"	
Kitchen	9'-1" x 9'-7"	

In our continuing effort to improve the units at Currie Green, the seller reserves the right to modify the interior & exterior design, specifications, location, size, design features, services, amenities and pricing without prior notice. This literature is for "marketing purposes" only and no representations of any type are made by this marketing material, which are subject to change without notice. All dimensions and square footages are approximate and modifications may vary by unit. NOT TO SCALE

TO LEARN MORE VISIT

CurrieGreen.ca

150 Dieppe Drive SW

Tina 403-369-6000

Marguerite 403-369-3000

curriegreen@statesmangroup.com



The Campus of
CurrieGreen

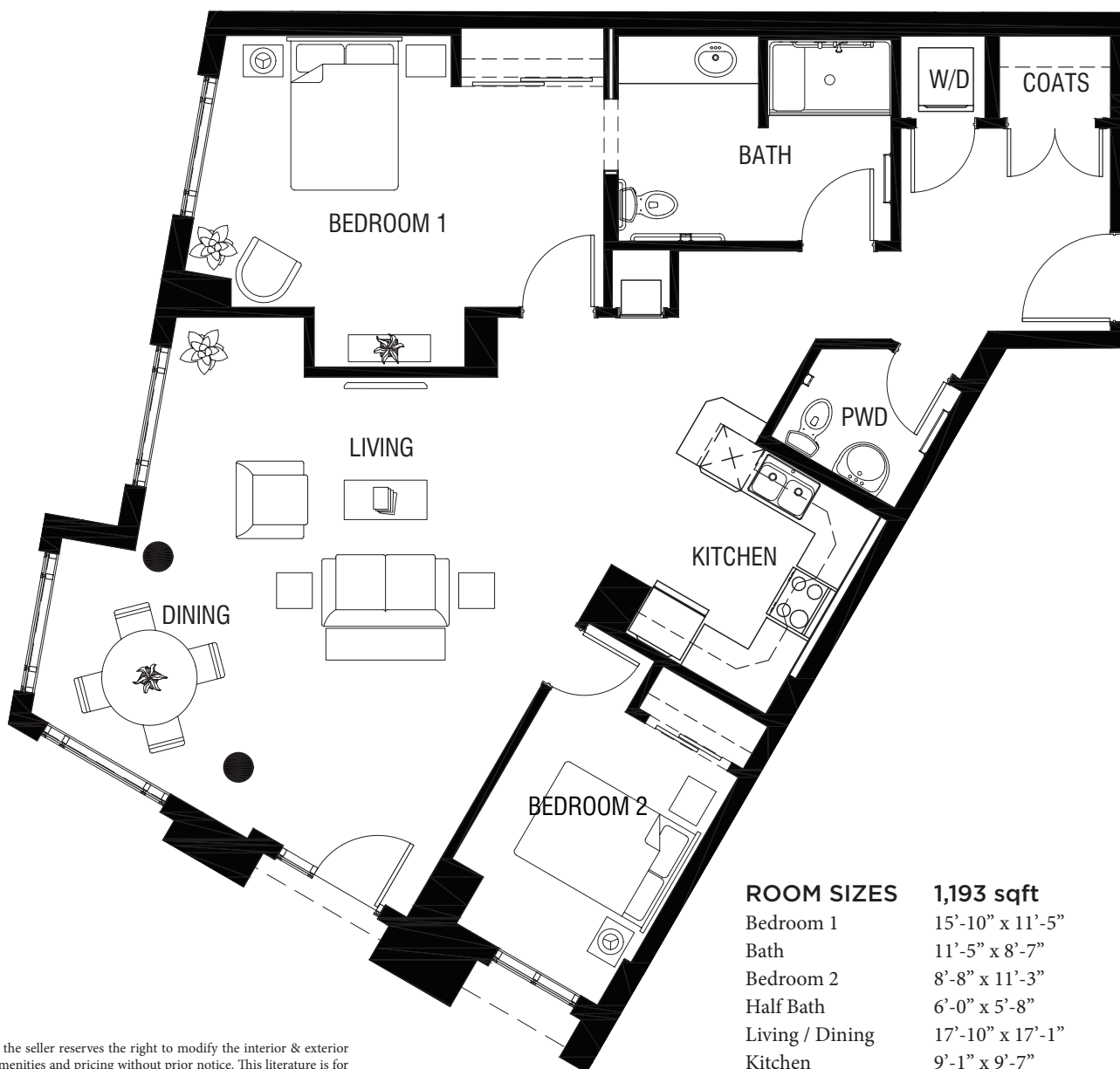
ROSE*

2 Bedroom | 1 ½ Bathroom | Solarium

*Garden Level



GARDEN LEVEL
KEY PLAN



ROOM SIZES	1,193 sqft
Bedroom 1	15'-10" x 11'-5"
Bath	11'-5" x 8'-7"
Bedroom 2	8'-8" x 11'-3"
Half Bath	6'-0" x 5'-8"
Living / Dining	17'-10" x 17'-1"
Kitchen	9'-1" x 9'-7"
Solarium	10'-6" x 8'-0"

In our continuing effort to improve the units at Currie Green, the seller reserves the right to modify the interior & exterior design, specifications, location, size, design features, services, amenities and pricing without prior notice. This literature is for "marketing purposes" only and no representations of any type are made by this marketing material, which are subject to change without notice. All dimensions and square footages are approximate and modifications may vary by unit. NOT TO SCALE

TO LEARN MORE VISIT

CurrieGreen.ca

150 Dieppe Drive SW

Tina 403-369-6000

Marguerite 403-369-3000

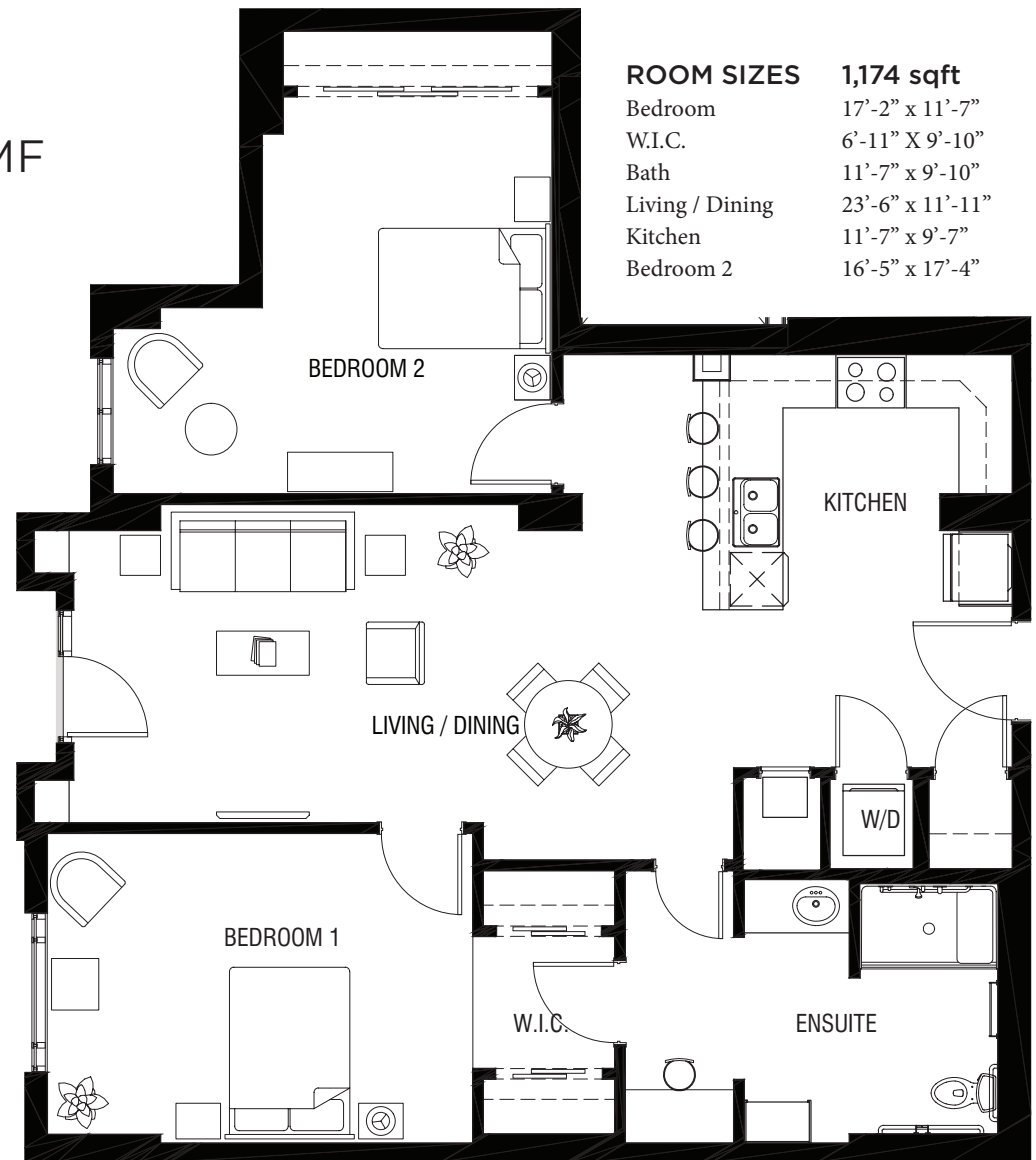
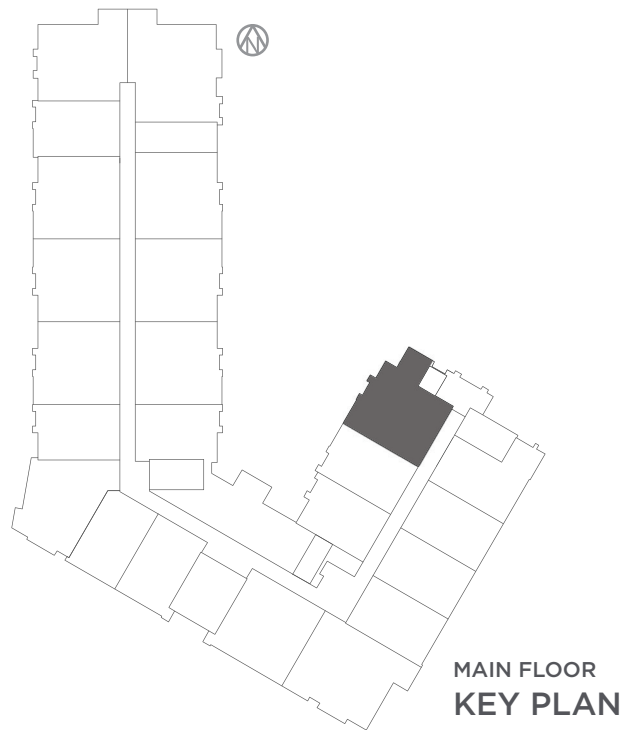
curriegreen@statesmangroup.com



SUNFLOWER^{MF}

2 Bedroom | 1 Bathroom

Main Floor



In our continuing effort to improve the units at Currie Green, the seller reserves the right to modify the interior & exterior design, specifications, location, size, design features, services, amenities and pricing without prior notice. This literature is for "marketing purposes" only and no representations of any type are made by this marketing material, which are subject to change without notice. All dimensions and square footages are approximate and modifications may vary by unit. NOT TO SCALE

TO LEARN MORE VISIT

CurrieGreen.ca

150 Dieppe Drive SW

Tina 403-369-6000

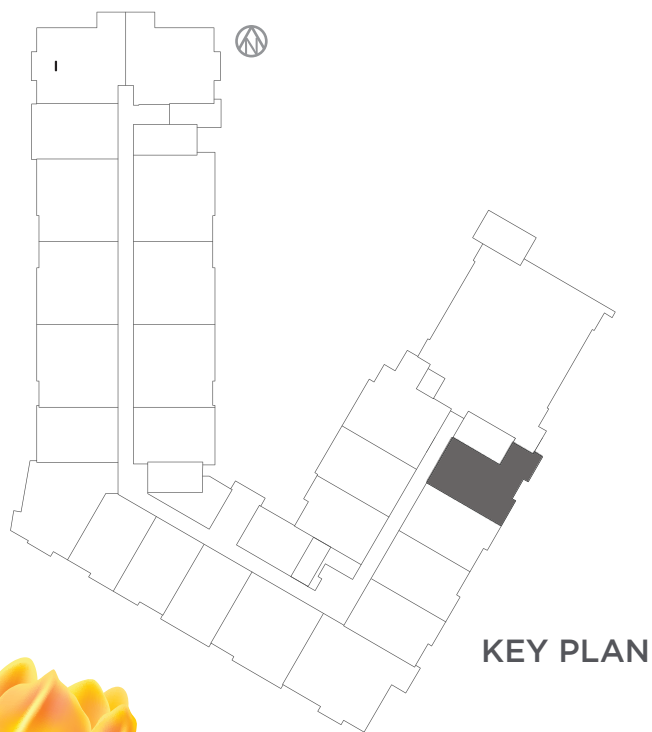
Marguerite 403-369-3000

curriegreen@statesmangroup.com

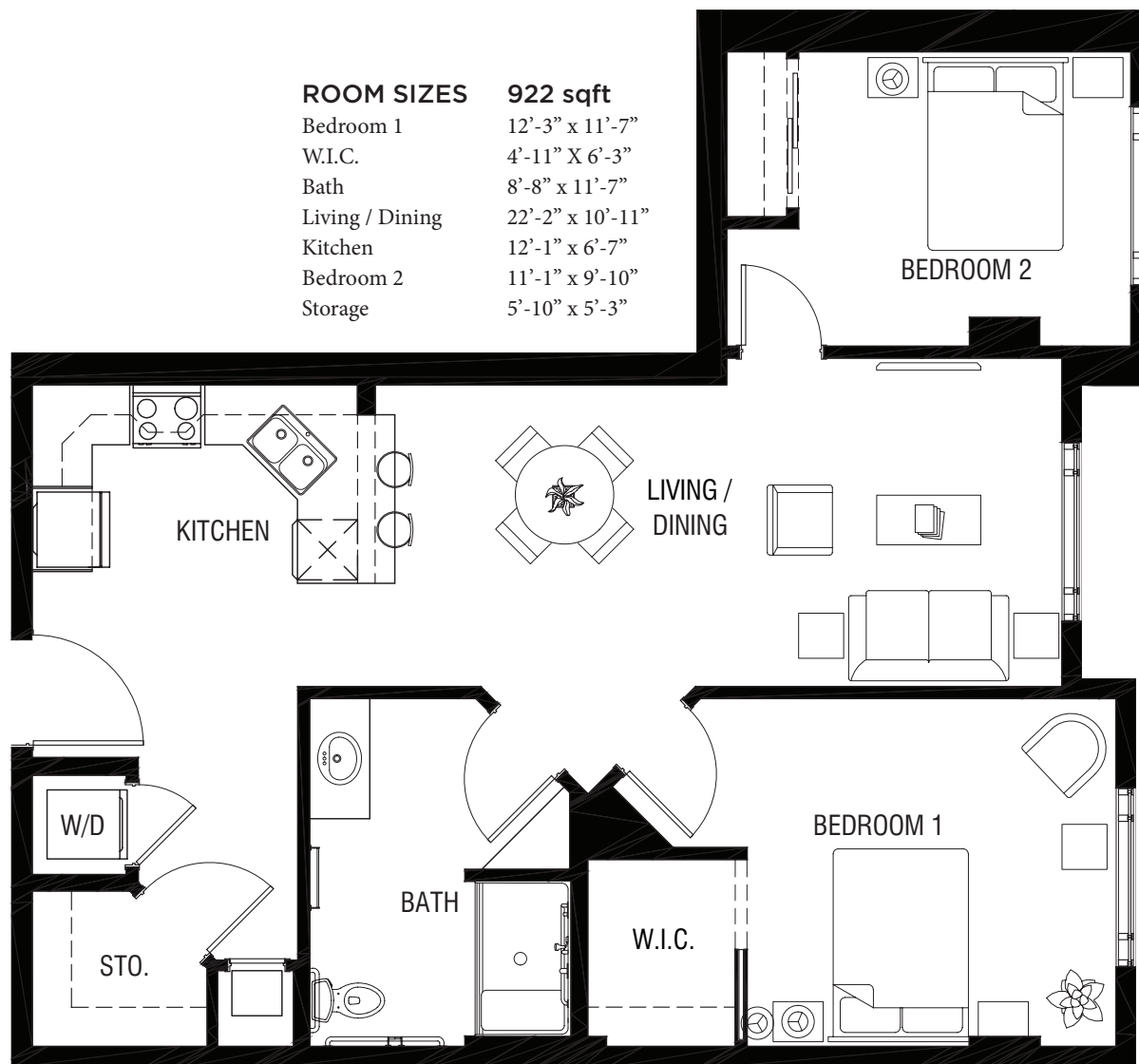


TULIP

2 Bedroom | 1 Bathroom | Storage



ROOM SIZES	922 sqft
Bedroom 1	12'-3" x 11'-7"
W.I.C.	4'-11" X 6'-3"
Bath	8'-8" x 11'-7"
Living / Dining	22'-2" x 10'-11"
Kitchen	12'-1" x 6'-7"
Bedroom 2	11'-1" x 9'-10"
Storage	5'-10" x 5'-3"



In our continuing effort to improve the units at Currie Green, the seller reserves the right to modify the interior & exterior design, specifications, location, size, design features, services, amenities and pricing without prior notice. This literature is for "marketing purposes" only and no representations of any type are made by this marketing material, which are subject to change without notice. All dimensions and square footages are approximate and modifications may vary by unit. NOT TO SCALE

TO LEARN MORE VISIT

CurrieGreen.ca

150 Dieppe Drive SW

Tina 403-369-6000

Marguerite 403-369-3000

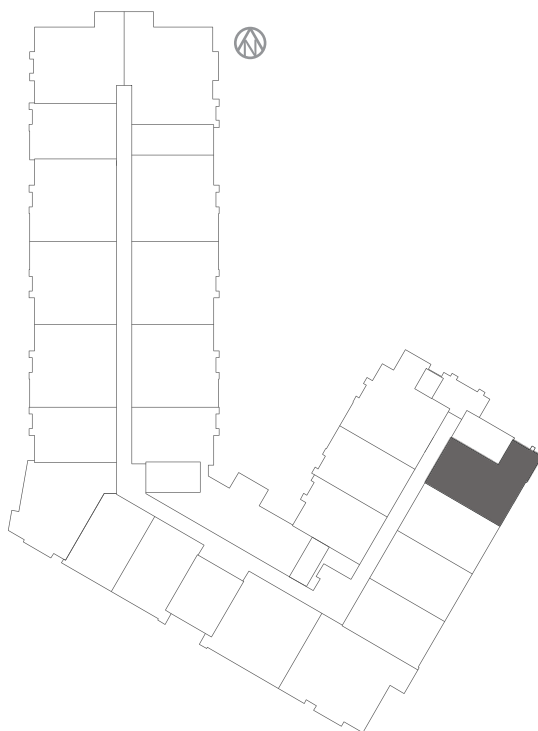
curriegreen@statesmangroup.com

TULIP^{MF}

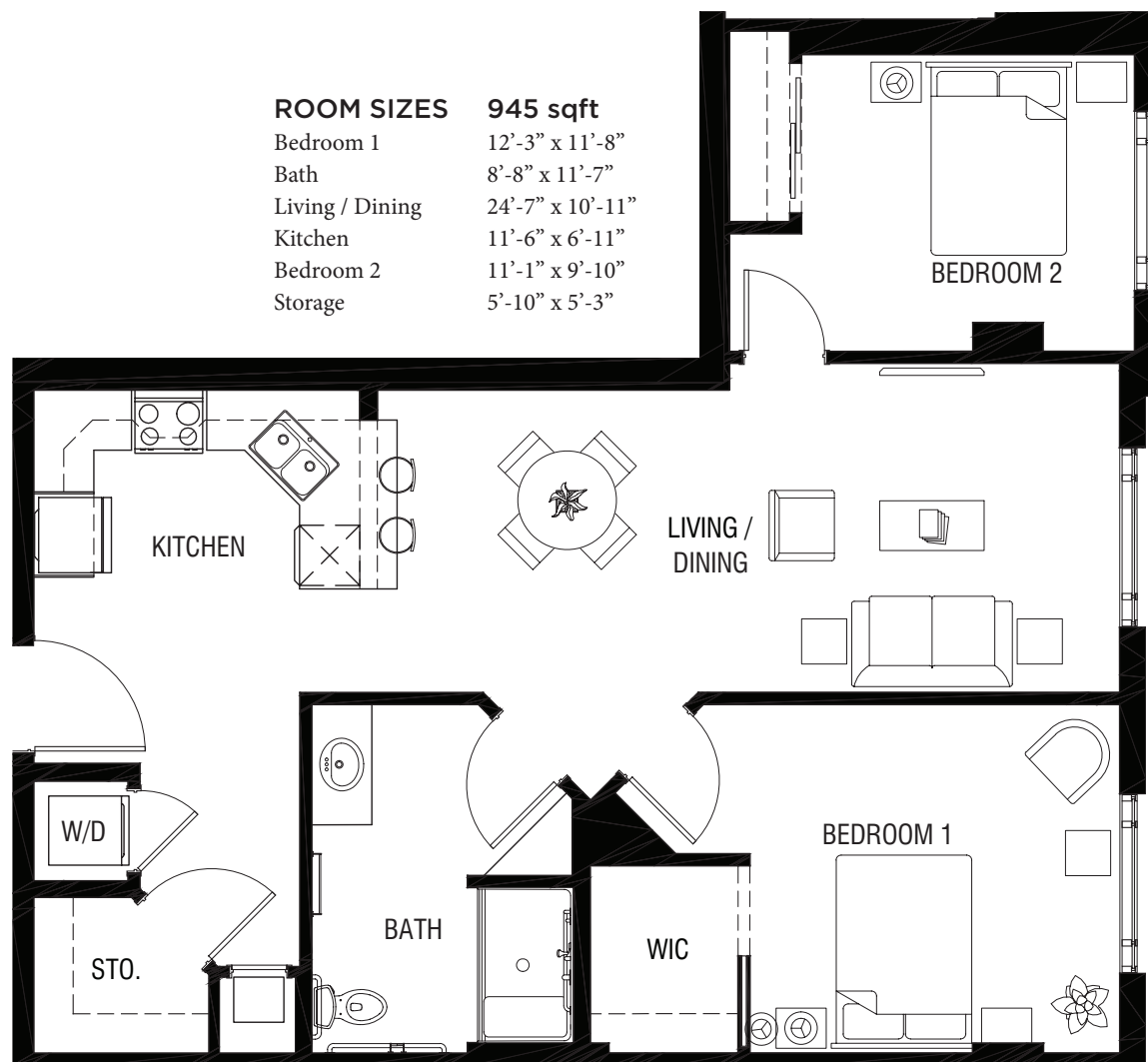
2 Bedroom | 1 Bathroom | Storage

Main Floor

MAIN FLOOR
KEY PLAN



ROOM SIZES	945 sqft
Bedroom 1	12'-3" x 11'-8"
Bath	8'-8" x 11'-7"
Living / Dining	24'-7" x 10'-11"
Kitchen	11'-6" x 6'-11"
Bedroom 2	11'-1" x 9'-10"
Storage	5'-10" x 5'-3"



In our continuing effort to improve the units at Currie Green, the seller reserves the right to modify the interior & exterior design, specifications, location, size, design features, services, amenities and pricing without prior notice. This literature is for "marketing purposes" only and no representations of any type are made by this marketing material, which are subject to change without notice. All dimensions and square footages are approximate and modifications may vary by unit. NOT TO SCALE

TO LEARN MORE VISIT

CurrieGreen.ca

150 Dieppe Drive SW

Tina 403-369-6000

Marguerite 403-369-3000

curriegreen@statesmangroup.com